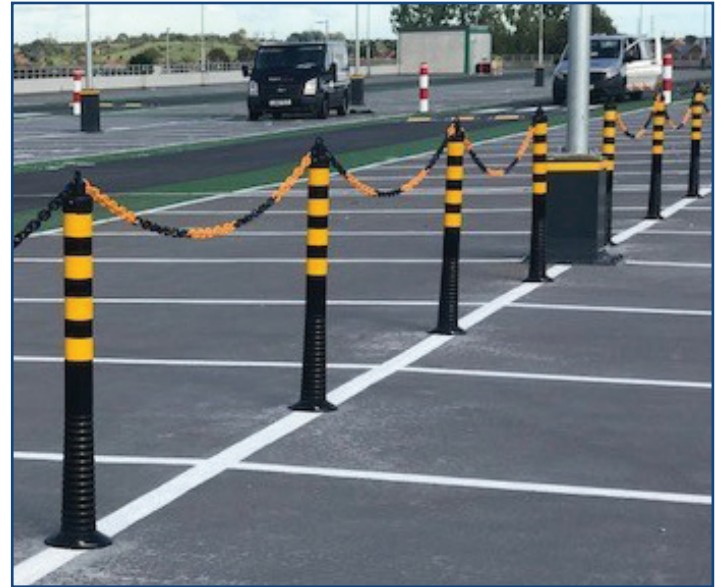


## Flexi-Delineator Range

Flexi-delineators designed to route vehicles safely round your industrial facility. They are ideal for segregation of traffic routes with risk of vehicle impact where barriers are not achievable or desired.

Highly visible with 4 no. Reflective Bands to promote night time safety. Soft under vehicle impact - they will crush and bend returning to original state without damage to the delineator or damage to the vehicles.



## Product Features

Where demarcation of traffic routes is paramount for safety

Segregation of traffic routes where risk of vehicle impact is likely to pedestrians

Moulded from flexible polymer, this product will flex, bend and return to shape

Variety of vibrant colours and reflectors available

## Technical Details

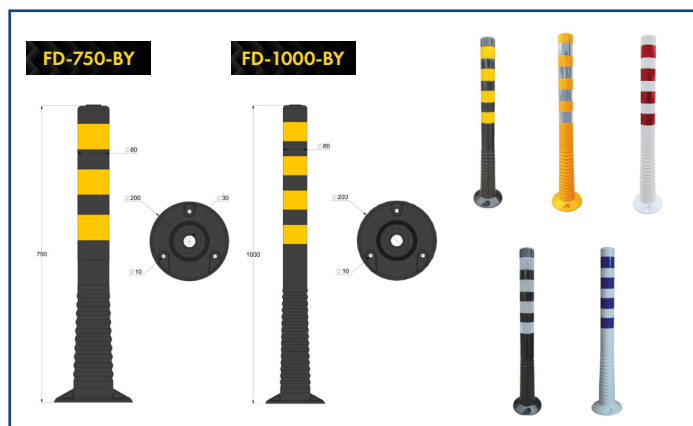
Height options - 750mm or 1000mm

80mm diameter posts supplied with 3 No. floor anchors (suitable for fixing to tarmac or concrete)

Fixed with M10 x 100mm Flange Head Coach Screw c/w Nylon Plug (3)

100% Recyclable Polyurethane construction

## Product Specification



<b>Material</b>	Polyurethane
<b>Recycling group</b>	PU/7
<b>Height</b>	750mm or 1000mm
<b>Main body diameter</b>	80mm
<b>Fixture hole diameter</b>	12mm
<b>Drill hole diameter</b>	18mm
<b>Fixing anchors</b>	M10 x 100mm Flange Head Coach Screw c/w Nylon Plug (3)
<b>Colour options</b>	Black/Yellow Yellow/Silver White/Red Black/Silver White/Blue