

BRANDSAFE

the impact safety specialists

part of IWS GROUP
the industrial Workplace Specialists

The Impact Safety Specialists



SAFETY BARRIERS

Polymer Low Level Bumper Barrier
Polymer Safety Pedestrian Barrier
Polymer Pedestrian Bumper Barrier
Polymer Pedestrian Safety Gate
Pedestrian Safety Barrier (SEG+)
Pedestrian Safety Gate (SEG+)
Pedestrian Handrail (HR50)
MHE / PIT Guardrail
Armco Safety Barriers

ARMCO ACCESSORIES

Armco Safety End
Armco Pedestrian Safety End
Armco Fishtail Safety End
Armco Safety Corner

BOLLARDS AND COVER KITS

ImpactSAFE Protection Posts
ImpactSAFE Bollards
Demountable Drop Core Bollards
Polymer Protection Bollards
Bollard Cover Kits

COLUMN AND POST PROTECTION

PolyWRAP Column Protector
PolyWRAP SpaceSaver
Lamp and Sign PostWRAP
SoftWRAP Protection

TRAFFIC SAFETY AND MANAGEMENT

EV Charging Point Protection
Flexi-Delineator Range
Speed Bumps
Wheel Stops

SECURE CAGES AND ENCLOSURES

LOADING BAY AND DOOR PROTECTION

Goalposts and Height Warning Clatter Bars
HGV Trailer Landing Plates
CornerWRAP Corner Protection
EdgeWRAP Edge Protection

RACKING PROTECTION

Rack Armour® Upright Protection
Polymer End of Aisle Barriers
Polymer Floor Rail Bumpers

WAREHOUSE ACCESSORIES

Beaverswood® Ticket Holders and Label Holders
Beaverswood® Magnetic Easy-wipe Racking Strip
Modulean® Shadow Boards
racksack® Waste Segregation
Beaverswood® Floor Signals and Graphic Markers
frames4floors® and frames4docs®
Anco® Component Organisers
Anco® Clicka Shelving
Anco® Long Rivet Packing Workstation
Anco® Plastic Storage Bins

IWS GROUP SERVICES

4 - 20

6

7

8

9

10

11

12

13

14 - 20

22 - 27

24

25

26

27

28 - 34

30

31

32

33

34

36 - 43

38 - 39

40 - 41

42

43

44 - 53

46 - 47

48 - 49

50

51

52 - 53

54 - 59

56

57

58

59

60 - 65

62 - 63

64

65

66 - 77

68

69

70

71

72

73

74

75

76

77

78 - 79

Welcome to Brandsafe

Europe's leading innovator of high visibility impact protection and safety solutions for the industrial workplace, Brandsafe is setting new safety standards worldwide as part of IWS Group.

We're a team of technical experts, proud to be pioneers in superior performance, high-visibility, sustainable impact protection for the industrial workspace – challenging the traditional and overly-expensive solutions on the market.

We keep people, physical assets and premises safe with our innovative range of high visibility products, designed to protect and to prevent.

Where we really separate ourselves from the rest is with our consultative approach, technical expertise, manufacturing and install capabilities. This enables us to provide an end-to-end solution; from product specification to on-site installation, all while remaining agile and responsive to the needs of each client we work with.

Our team works with you at every step of the process to consult and provide a bespoke solution to match your unique project requirements.

Brandsafe works with architects, main contractors and end clients – adopting a consultative role to deliver the best possible solution for each project. Our personalised approach, innovative product design and quick implementation has earned us an industry-leading reputation across the UK and Europe.

We're known in the industry for our exceptional quality of service and speed of execution – from design to installation; we are the very best in class.

Brandsafe's Vision

Safer industrial workplaces worldwide, protected with Brandsafe.

Brandsafe's Mission

We're setting new safety standards across industrial workspaces worldwide. Through our innovation of higher visibility safety solutions, designed to protect and prevent impact to protect people, products and property.

Brandsafe's Values

Industry Expertise We are the industry specialists in this category, thinking beyond the supply of the product to consider the environment and business that it functions within.

Customer-led Innovation Our customers are at the centre of our focus and they inspire our innovative designs. Our design ethos is one of continuous efficiency and improvement – never standing still, always updating and always adding value.

Collaborative Approach We work in partnership with our customers, colleagues and stakeholders. We look out for each other, help each other and work together to achieve the best possible results.

Passion and Energy There is an innate passion, energy and vibrancy that runs through the entire team at Brandsafe, which powers our performance. It's been a key part of our identity since day one and it's intrinsic to our culture.

Unmatched Agility We possess an agility and speed that cannot be matched in this industry. We are known for our fast lead times for design, delivery and installation, all while maintaining the highest levels of quality and customer care.



What You Can Expect From Brandsafe

Innovative Design

Combining the strength of steel with the high visibility benefits of polymer and the impact absorbing properties of rubber, creating a hybrid, integrated, high performance solution.

Sustainable Product Range

Our products are made to last and, where we can, we manufacture using recycled materials.

Best in Class Value

Brandsafe products are engineered to achieve extraordinarily value and we only specify what you need.

Specification Consultation

We make it our business to get to know yours, so we can help you achieve the optimal solution for safety and budget.

Speed of Service

From design to installation – we're the most responsive in the market.

Superior Quality

When customers work with us, they stay with us. High quality resonates throughout our products and services.

High Visibility Incident Prevention

Not just impact protection.

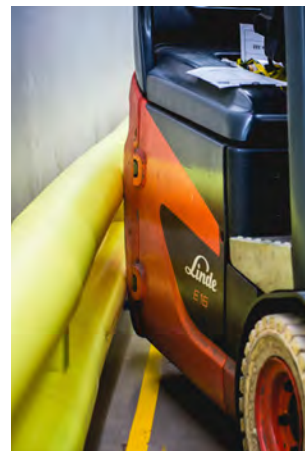
Safety Barriers

High quality and innovative solutions designed to protect valuable assets and human resources.

Manufactured from low-maintenance High Density Polyethylene (HDPE), our polymer safety barriers are specifically engineered to withstand extreme conditions and provide long-lasting protection.



Barriers that
can flex
and absorb
impacts





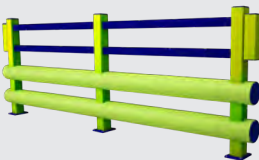
Features and Benefits

Polymer barriers flex and absorb impacts. They have a unique feature which enables the product to reform to its original shape after impact. Available in a range of high visibility colours for accident prevention.

Control the flow of operatives and personnel, while keeping them safely segregated from vehicles with our range of pedestrian barrier and handrail systems.

MHE / PIT Guardrail is a modular safety barrier and guiding system used to define forklift trucking routes – eliminating impact risk to structural building columns and mezzanine supports.

We also offer a range of Armco Safety Barriers and accessories for robust and cost-effective protection when polymer systems aren't applicable.



Polymer Low Level Bumper Barrier

Maximise valuable floorspace and low level impact protection with this strong and highly visible polymer safety barrier system.

These polymer bumper barriers offer complete warehouse protection by creating safe zones.



Single or Double Barrier Options



Colourfast
Yellow &
Grey

Hi Vis
Yellow &
Blue

Safety
Yellow &
Grey

Product Details

Low level bumper barriers that provide the right amount of visibility and strength, whilst maximising space.

Deflects under impact without damaging.

Single or double barrier options.

Quick and easy installation.

High visibility colours clearly gives safe working boundaries for MHE drivers.

Technical Details

Manufactured from a flexible HDPE polymer with a foam diffuser.

Barrier Heights: 260mm or 565mm.

Barrier Width: 300mm (at the footplate).

Barrier Length: 900mm (and upwards).

Fully recyclable and non-toxic.

Use in temperatures as low as -40°C.

Polymer Safety Pedestrian Barrier

A new generation of polymer segregation system to separate forklifts from pedestrian routes across industrial buildings.

They have been designed with safety and segregation in mind.



Product Details

Ideal for highlighting safe pedestrian areas and guiding people in the right direction.

The system benefits from steel boots with the option to add a low-level safety barrier rail.

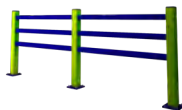
Ideal for zoning off LV and IT Cabinets to restrict MHE equipment and pedestrian encroachment to these areas.

High visibility colours to highlight safe pedestrian areas.

Various Colour Options



Colourfast Yellow & Grey



Hi Vis Yellow & Blue



Safety Yellow & Grey

Technical Details

Manufactured from HDPE polymer, making them highly durable.

Barrier Height: 1100mm with 3 rails.

Components included:
Corner Post, End Post, Mid Post,
Post Centres, Demountable Options.

Fully recyclable and non-toxic.

Use in temperatures as low as -40°C.

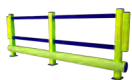
Polymer Pedestrian Bumper Barrier

Bumper barriers for pedestrian rails provide that extra level of protection from MHE impacts, both to pedestrians and vehicles operating in the workplace.

Ideal for MHE impact protection with the robust double rail barrier solution.



Single or Double Barrier Options



**Colourfast
Yellow &
Grey**

**Hi Vis
Yellow &
Blue**

**Safety
Yellow &
Grey**

Product Details

Easy to see and durable, these bumper barriers are ideal for warehouse and pedestrian segregation.

Deflects under impact without damaging.

Single or double bumper options.

Quick and easy installation.

High visibility colours clearly gives safe working boundaries for MHE drivers.

Technical Details

Manufactured from a flexible HDPE polymer with a foam diffuser.

Barrier Heights: 1150mm (top of posts).

Barrier Width: 240mm (at the footplate).

Barrier Length: 900mm (and upwards).

Fully recyclable and non-toxic.

Use in temperatures as low as -40°C.

Polymer Pedestrian Safety Gate

Highly visible and durable Polymer Pedestrian Safety Gates that offer safe and easy pedestrian access routes when used together with our range of polymer safety barrier systems.

Ideal where MHE drivers and pedestrians pass each other frequently.



Product Details

Unlike metal gates, there is minimal floor damage when impact occurs, saving maintenance costs long term.

Deflects under impact without damaging.

Use in combination with pedestrian barriers.

Quick and easy installation.

High visibility colours clearly highlight safe pedestrian areas.

Various Colour Options



Colourfast Yellow & Grey



Hi Vis Yellow & Blue



Safety Yellow & Grey

Technical Details

Manufactured from HDPE polymer, making them highly durable.

Gate Heights: 1150mm (top of posts).

Gate Width: 240mm (at the footplate).

Gate Length: 800mm (and upwards).

Fully recyclable and non-toxic.

Use in temperatures as low as -40°C.

Pedestrian Safety Barrier (SEG+)

A modular system that defines walkways and segregates forklift traffic from pedestrians.

Control the flow of operatives and personnel, while keeping them safely segregated from forklift trucks.



Product Details

The new generation of polymer handrail, segregators and barriers for today's high end industrial environments.

Designed to segregate forklifts from pedestrian routes.

Comprised of a steel boot, polymer post and polymer rail sets.

For areas where pallet stacking is adjacent, a low-level barrier can be added.

PEDESTRIAN SAFETY BARRIER SEG+

SEG-3EP-B	SEG3 end post - black c/w floor anchors
SEG-3MP-B	SEG3 mid post - black c/w floor anchors
SEG-3CP-B	SEG3 CNR post - black c/w floor anchors
SEG-3R-1550Y	SEG3 rail set 1580mm long - yellow
SEG-3R-980Y	SEG3 rail set 980mm long - yellow
SEG-DM-KIT	SEG demountable post shoe c/w 4 no. floor anchors

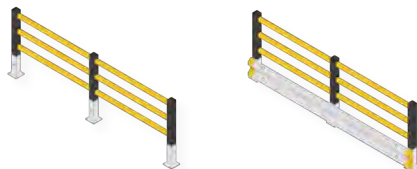
Note; please contact our Product Specialists for 2 rail systems and options for additional low-level barrier rails

Technical Details

Height - 1100mm
(BS 6180:2011 / EN 1991-1-1 Eurocode 1).

Post Centres - 1600mm (typical).

Colour - Black Posts and Yellow Rail Sets.



Pedestrian Safety Gate (SEG+)

A serious safety upgrade to control the flow of operatives and personnel across forklift trucking routes and/or production environments.



Product Details

Designed to prevent the spill of pedestrians into trucking routes and work environments.

Lightweight moulded from polyethylene in the UK - a significant safety upgrade for pedestrian routes across industrial facilities.

Available in yellow or black, incorporating signage panel and sprung return hinge kit.

Compatible with Armco, MHE / PIT Guardrail and Pedestrian Handrail systems.

Technical Details

Typical finished height - 1000/1100mm.

Variable gate openings - 900mm to 1200mm boxed as a kit c/w sprung return hinges (2 no.) and all required hardware.



Note: contact our Product Specialists for all possible configurations and options

PEDESTRIAN SAFETY GATE	
PSG-1200-Y	Pedestrian safety gate 1200 yellow c/w hinge kit ●
PSG-1200-B	Pedestrian safety gate 1200 black c/w hinge kits ●
PSG-SIGN-A	Pedestrian safety gate signage panel type a (pedestrian + forklift)
PSG-GHP-1100	Stand alone pedestrian safety gate hinge post c/w floor anchors
PSG-GRP-1100	Stand alone pedestrian safety gate receive post 1200mm high c/w floor anchors (4 no. Sp m10 x 140)

Pedestrian Handrail (HR50)

Make your handrail installations more visible by specifying a HR50 black and yellow system.



Product Details

A simple but highly effective upgrade to traditional kee-klamp handrails.

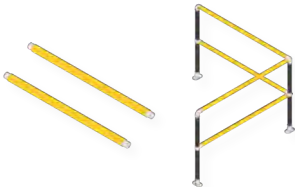
The addition of polymer colour sleeves (black and/or yellow) will make handrails stand out and improve site safety.

Designed to slide over 42.4mm diameter kee-klamp handrails and uprights, handrails making them visible to drivers, operators and pedestrians transform the look and feel of your barriers.

Technical Details

Height - 1100mm conforming to BS 6180:2011 / EN 1991-1-1 Eurocode 1

Smooth transitions across modular components and warm to touch rails are significant DDA compliance features.



HR50 HANDRAIL	
HR50-EP	HR50 pre-assembled upright end post - sleeved black 1100mm high. C/w 2no. Floor anchors
HR50-MP-HR50	HR50 pre-assembled upright mid post - sleeved black 1100mm high. C/w 2no. Floor anchors
HR50-CP	HR50 pre-assembled upright corner post - sleeved black 1100mm high. C/w 2no. Floor anchors
HR50-RS-1600Y	HR50 rail set - 2 x 1550mm long, sleeved yellow ●
R50-RS-1000Y	HR50 rail set - 2 x 950mm long, sleeved yellow ●
PSG-HP-HR50	Pedestrian safety gate hinge post HR50
PSG-RP-HR50	Pedestrian safety gate receive post HR50

MHE / PIT Guardrail

MHE / PIT Guardrail is a modular safety barrier and guiding system to segregate forklift trucking routes from pedestrian walkways.



Product Details

Used to define forklift trucking routes – eliminating impact risk to building columns and mezzanine / conveyor supports.

Designed to deal with low-level fork penetration into pedestrian walkways (particularly relevant for Low Level Order Pickers LLOPs).

Lower rails can withstand 5kph impacts up to 5 Tonnes. Posts fitted with impact absorbing rubber.

Foam gaskets are included underneath the base rail to prevent dirt and debris collection; closed cell prevents corrosion during cleaning processes.

Technical Details

Height - 1100mm
(BS 6180:2011/ EN 1991-1-1 Eurocode 1).

Post Centres - 1850mm (typical).

Colour - Powder Coat Finish
RAL 1023 (yellow).

GUARDRAIL SYSTEM

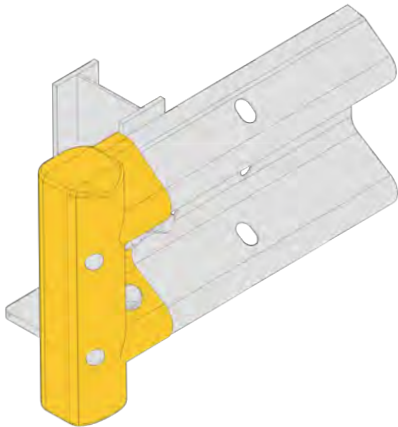
PGR-EP-1100	PIT Guardrail End Post
PGR-MP-1100	PIT Guardrail Mid Post
PGR-CP-1100	PIT Guardrail Corner Post
PGR-RS1825	PIT Guardrail (3) Rail Set 1825
PGR-RS1500	PIT Guardrail (3) Rail Set 1500
PGR-RS1000	PIT Guardrail (3) Rail Set 1000
PSG-HP-Y	Pedestrian Safety Gate Hinge Post
PSG-RP-Y	Pedestrian Safety Gate Receive Post

Note: See page 11
for Pedestrian Safety
Gate options



Armco 360 Safety Barrier

A unique low-level Armco solution to eliminate forklift penetrations - ideal for perimeter wall and equipment protection.



Product Details

360mm high barrier with fork impact rail.

Low-cost I beam post for low level protection.

Optional handrails with black and yellow sleeves for creating pedestrian walkways.

Economical solution for holding traffic off walls and equipment.

ARMCO 360 SAFETY BARRIER

AP-360	Armco post 360mm high bolt down (type a baseplate)
FIR-MD5050-G	Armco fork impact medium duty rail type a - 50 x 50 x 3 x 3000mm, galvanised
AR-3500	Armco corrugated safety barrier rail 3500mm (3mm)
FXG-TB16150G	M16 x150 thru-bolt - galvanised (3 no. Required)

Technical Details

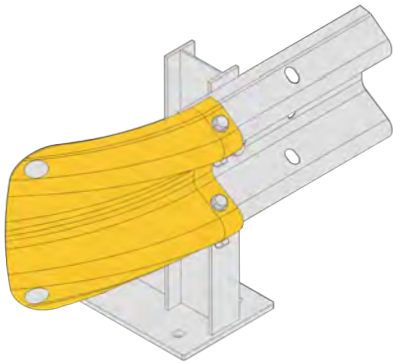
1.6m or 3.2m post centres for high and low impact areas.

Configurable on-site with polymer Armco accessories.

“Economical solution for preventing traffic from damaging walls and equipment”

Armco 560 / 610 Safety Barrier

Domestic vehicle safety barrier with the contrasting black with yellow hi-vis ends, corners, capping and impact absorbing accessories.



Technical Details

610mm or 560mm high post.

1.6m or 3.2m post centres for high and low impact areas.

Fixing options - M16 thru-bolts, M20 thru-bolts or M16 chemical resin/stud fix.



Product Details

The industry standard safety barrier for domestic vehicle areas - 610mm high is the latest design standard recommended by the Department of Transport (560mm high is the old standard).

Economical solution for protecting the building and routing of vehicles in and around your front-of-house areas.

Highly effective system for the protection of building walls, segregating traffic lanes / routes and protecting vulnerable equipment.

Swift to install and long term serviceable without corrosion or degradation.

Refer to BS EN 1991-1-1:2002 Standards for domestic car parks.

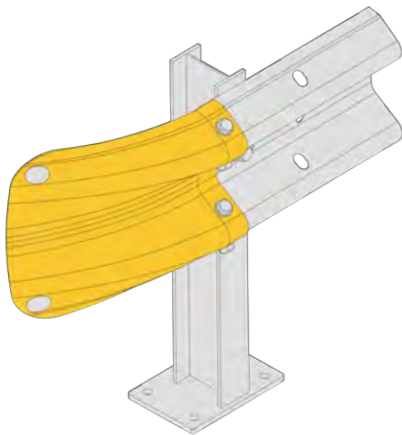
ARMCO 560/610 SAFETY BARRIER

AP-560	Armco post 560mm high bolt down (type b baseplate)
AP-610	Armco post 610mm high bolt down (baseplate type b)
AR-3500	Armco corrugated safety barrier rail 3500mm (3mm)
FXG-TB16150G	Rawl m16 x 150 thru-bolt - galvanised (4 no. Required)

Armco 760 Safety Barrier

This 760mm high barrier is the industry safety standard for commercial vehicles.

Combined with Brandsafe's range of high visibility Polymer accessories, they provide robust and cost-effective impact protection in industrial settings.



ARMCO 760 SAFETY BARRIER

AP-760	Armco 760 post - bolt down (type b baseplate)
AR-3500	Armco corrugated safety barrier rail 3500mm (3mm)
FXG- TB16150G	Rawl m16 x 150 throbolt - galvanised (4 no. Required)

Product Details

The industry standard safety barrier for industrial facilities - 760mm high is the latest design standard for commercial vehicles.

The most economical solution for protecting the building, HGV service yards and forklift trucking routes.

Highly effective and low-cost system for the protection of building walls, perimeters and vulnerable equipment.

Swift to install and long term serviceable without corrosion or degradation.

Technical Details

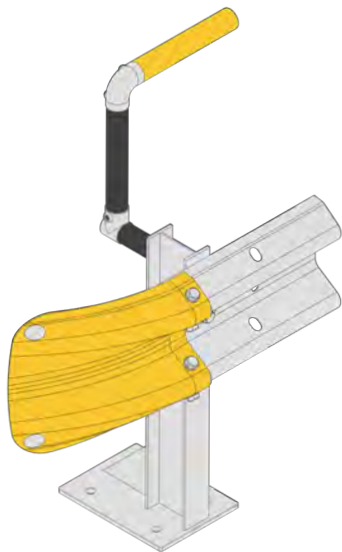
760mm high post to suit commercial vehicles.

1.6m or 3.2m post centres for high and low impact areas.

3 no. Fixing options - M16 throbolts, M20 throbolts or M16.

Armco 760HR Safety Barrier

Highly visible and defined walkways with black and yellow handrail sleeves and polymer Armco accessories.



ARMCO 760HR SAFETY BARRIER

AP-760HR-END	Armco 760HR end post c/w handrail extension, black sleeve and elbow
AP-760HR-MID	Armco 760HR mid post c/w handrail extension, black sleeve and elbow
AP-HR-CNR-KIT	Armco 760HR corner kit c/w yellow sleeve and elbow
AHR-3200Y	Armco handrail - 3200mm centres (3200mm steel / 3080mm yellow sleeve)
AR-3500	Armco corrugated safety barrier rail 3500mm (3mm)
FXG-TB16150G	Awl m16 x 150 thrubolt - galvanised (4 no. Required)

Product Details

760mm high barrier with 1100mm pedestrian handrail in black and yellow.

Ideal for segregating HGV/forklift and pedestrian routes.

Used extensively for level access ramps.

Design ensures “no-trip” hazard to the webbed post.

Technical Details

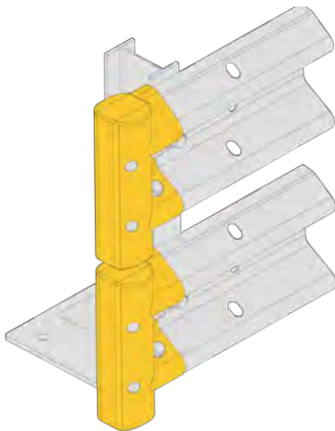
1.6m or 3.2m post centres for high and low impact areas.

Configurable on-site with polymer Armco safety ends and corners.



Armco 760D Safety Barrier

A unique double Armco solution to prevent forklift penetrations - ideal for high impact zones.



Product Details

760mm high barrier with fork impact rail.

Double crash rail solution where total and high impact protection are critical.

Webbed or pedestrian post options for "no-trip" solution.

Optional handrails with black and yellow sleeves for creating pedestrian walkways.

Technical Details

1.6m or 3.2m post centres for high and low impact areas.

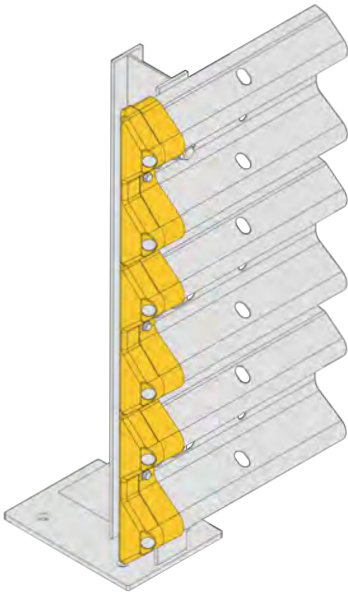
Configurable on-site with polymer Armco safety ends and corners.

ARMCO 760D SAFETY BARRIER

AP-760D	Armco post 760D post - bolt down double holed (type b baseplate)
AR-3500	Armco corrugated safety barrier rail 3500mm (3mm)
FXG-TB16150G	Rawl m16 x 150 throbolt - galvanised (4 no. Required)

Armco 1100D / 1100T Safety Barrier

Ideal for areas with a high risk of HGV and forklift impacts.



ARMCO 1100D/1100T SAFETY BARRIER

AP-1100D	Armco post 1100D post - bolt down double holed (type b baseplate)
AP-1100T	Armco post 1100T post - bolt down triple holed (type b baseplate)
FIR-SD12575-G	Armco fork impact super duty rail type c - 125 x 75 x 8 x 3000mm, galvanised
AR-3500	Armco corrugated safety barrier rail 3500mm (3mm)
FXG-TB16150G	Rawl m16 x 150 thru-bolt - galvanised (4 no. Required)

Product Details

Improve your protection and safety with double and triple barrier rails.

Ideal for HGV and Forklift areas where drivers operate at speed.

Mitigate risk for high stillage and pallet stacking areas.

Ideal for external protection of sprinkler, fuel and gas tanks.

Technical Details

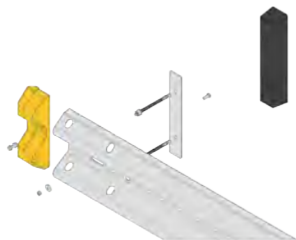
Available with handrail extensions for creating walkways.




Armco Wall Mounted Safety Barrier

The Armco wall mounted safety barrier is an effective and economical option for wall and vehicle protection.

A simple but highly effective wall mounted Armco Safety Barrier solution, with built-in ImpactSAFE shock absorber.



ARMCO WALL MOUNTED SAFETY BARRIER

AWP-75K	Armco wall mounted plate 6mm galvanised impact plate c/w 400mm high x 75mm deep c/w ImpactSAFE buffer + fixings kit
AR-3500	Armco corrugated safety barrier rail 3500mm (3mm)
ASE-Y	Armco safety end yellow  with 2 no. Silver diamond grade reflectors

Product Details

A low cost and modular solution, incorporating an ImpactSAFE buffer to arrest shock around fixings.

Suitable for brick, block and/or pre-cast concrete walls.

Recommended for 1.6m wall fix for high and 3.2m wall fix for low impact areas.

Benefits from keeping the barrier tight to the protected walls but at the same time cushioning the impact.

Technical Details

Depth of overall barrier solution 165mm (wall to front face of barrier).

Installation - 14mm diameter drill holes to 100mm depth.

Note; Mounting Plate, Armco Barrier and Safety Ends all need to be purchased for a complete Wall Mounted Safety Barrier solution.



Do you require a **bespoke**
impact protection solution?



Get in touch with our team
of Product Specialists on
+44 (0)1525 850222

Armco Accessories

Creating a safer
environment for
drivers, operators
and pedestrians.

Industry standard Armco with highly visible and reflective accessories - add ImpactSAFE buffers to alleviate shock to fixings and floor surfaces, for a truly effective safety solution.



The hi-vis
colours of these
accessories
contrast against
the steel barrier
rails





Product Details

Create a highly effective safety barrier solution with Brandsafe's industry leading range of Armco accessories.

Ends, caps, reflectors and shock absorbing ImpactSAFE Buffers - gives the Industrial Building safety and protection.

Cap-off the exposed Armco posts that might potentially cause safety issues for pedestrians.

Offers a highly visible and impact resistant barrier option for a cost-effective investment.

ARMCO IMPACTSAFE BUFFER & REFLECTORS

ISA Buffer	ImpactSAFE Armco buffer black ●
ASR-YY	Armco safety reflector yellow/yellow ● ●
ASR-RW	Armco safety reflector red/white ● ○

ARMCO ENDS

AE-135Y	Armco end (135mm long) yellow ●
AE-240Y	Armco end (135mm long) yellow ●

ARMCO POST CAPS

APC-Y	Armco safety post cap (127 x 76 x 13kg ub) yellow ●
APC-B	Armco safety post cap (127 x 76 x 13kg ub) black ●

Technical Details

Manufactured in the UK from polyethylene
- 100% recyclable.



Armco Safety End

Highly visible, robust and friendly to pedestrians, doubling as a variable angle when abutted.

Low-cost polymer end/corner moulding - hi-vis and simple to fit.



Product Details

Polymer moulded ends with single point fixing makes this product easy to use and swift to install.

Available in yellow or black with two diamond grade reflectors, your Armco ends can be terminated safely with colour and night-time visibility.

Can be used to abut Armco barrier runs to create internal or external corner angles.

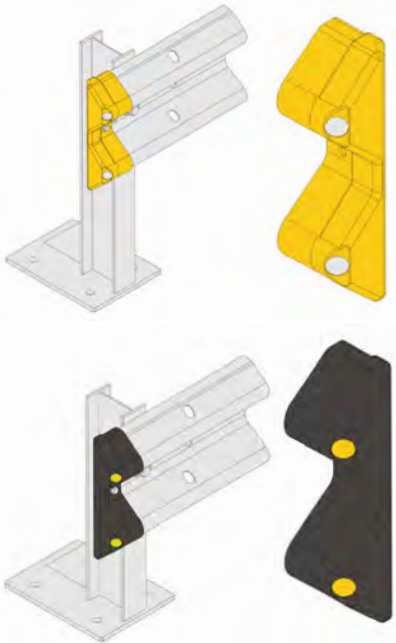
Ideal for covering sharp Armco cut ends.

Technical Details

Suits Armco 310mm x 85mm corrugated rails.

Manufactured in the UK from polyethylene.

Bolt fix secured with 1 no. M10 x 35mm Bolt-Set (included).



ARMCO SAFETY ENDS

ASE-Y	Armco safety end yellow ● with 2 no. silver diamond grade reflector
ASE-B	Armco safety end black ● with 2 no. yellow diamond grade reflector

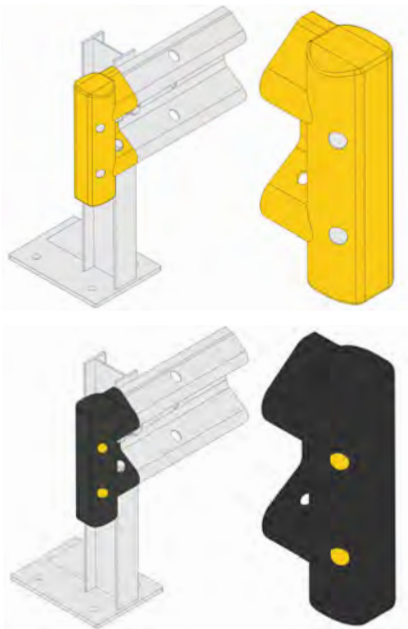
ARMCO BOLT SET

FXG-BS1035G	M10 x 35mm bolt set, galvanised (1 no. required)
-------------	--

Armco Pedestrian Safety End

The addition of pedestrian friendly Armco terminals will promote increased safety across your facility.

Pedestrian safety ends for Armco barriers – upgrade your facility for improved safety for your personnel.



ARMCO PEDESTRIAN SAFETY ENDS

APSE-Y	Armco pedestrian safety end yellow ● with 2 no. silver diamond grade reflector
APSE-B	Armco pedestrian safety end black ● with 2 no. yellow diamond grade reflector

ARMCO BOLT SET

FXG-BS1635G	M16 x 35mm bolt set, galvanised (2 no. required)
-------------	--

Product Details

Creates a safe and smooth surface, protecting nearby pedestrians from injury.

Provides safe and visible termination to Armco rails.

Supplied as standard in yellow or black with diamond grade reflectors.

Technical Details

Manufactured in the UK from polyethylene – 100% recyclable.

Full retrofit compatibility with all steel Armco terminals.

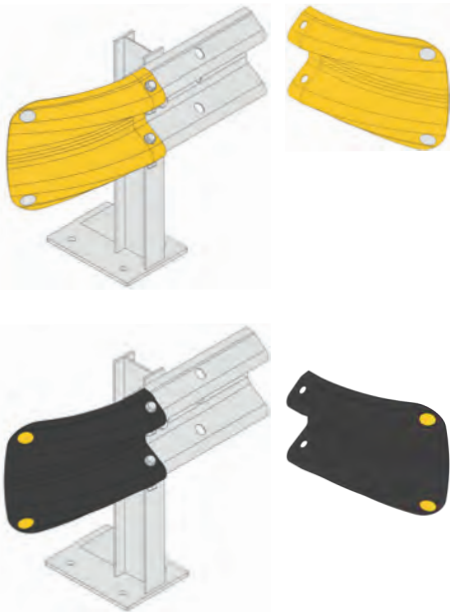
Bolt fix secured with 2 no. M16 x 35mm bolt-set (to suit pre-holed Armco rail).



Armco Fishtail Safety End

Flexible polymer fishtail safety ends for stand-out visibility for HGV drivers, forklift operators and car owners.

Provides safe and visible termination to Armco rails.



ARMCO FISHTAIL SAFETY ENDS

FSE-Y	Fishtail safety end yellow ● with 2 no. silver diamond grade reflectors
FSE-B	Fishtail safety end black ● with 2 no. yellow diamond grade reflectors

ARMCO BOLT SET

FXG-BS1635G	M16 x 35mm bolt set, galvanised (4 no. required)
--------------------	--

Product Details

Flexible under impact (low-to-no damage to vehicles).

Full retrofit compatibility with all steel barriers.

Supplied in yellow with silver diamond grade reflectors for HGV / service yard areas.

Supplied in black or yellow with diamond grade reflectors for domestic vehicle and front-of-house area.

Technical Details

Manufactured in the UK from 100% recyclable polyethylene.

Bolt fix secured with 4 no. M16 x 35mm.



Armco Safety Corner

Safety driven design and development to make your Armco barrier truly safe and visible to your MHE / PIT operators and HGV vehicle drivers.

A radical product innovation to bring colour, flexibility and visibility to Armco safety barrier installations - new and old.



External 90°

Internal 90°



External 135°

Internal 135°

ARMCO SAFETY CORNERS - BLACK ○

ASC-EXT90-B	Armco safety corner external 90 degrees with yellow diamond grade reflector
ASC-EXT135-B	Armco safety corner external 135 degrees with yellow diamond grade reflector
ASC-INT90-B	Armco safety corner internal 90 degrees with yellow diamond grade reflectors
ASC-INT135-B	Armco safety corner internal 135 degrees with yellow diamond grade reflectors

ARMCO SAFETY CORNERS - YELLOW ●

ASC-EXT90-Y	Armco safety corner external 90 degrees with silver diamond grade reflector
ASC-EXT135-Y	Armco safety corner external 135 degrees with silver diamond grade reflector
ASC-INT90-Y	Armco safety corner internal 90 degrees with silver diamond grade reflectors
ASC-INT135-Y	Armco safety corner internal 135 degrees with silver diamond grade reflectors

Product Details

Designed for fitment with a single Armco post to save you cost and install time.

Available for next-day delivery in yellow with silver reflectors for service yards and forklift areas.

Also available for next-day delivery in black with yellow reflectors for front-of house and domestic vehicle areas.

Technical Details

Moulded in the UK from polyethylene.

Available as an external and internal.

90 degree and 135 degree angle options.

Includes 40mm diamond grade reflectors.



Bollards and Cover Kits

Brandsafe innovation at its best. Discover our unrivalled range of highly visible, sustainable, premium quality bollards and posts.

All our steel cores are hot dip galvanised to BS EN ISO 1461, giving you a minimum of 15 years rust-free longevity. This, coupled with snap-fit slide over cover kits moulded in the UK from polyethylene, makes our bollards and posts stand out from the crowd.

Provides robust impact protection with high visibility polymer covers





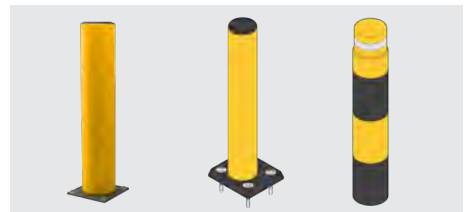
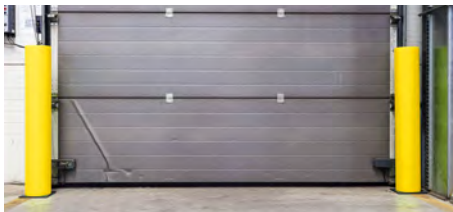
Features and Benefits

Painting bollards is a thing of the past. With polymer cover kits, you are maintenance-free. Multiple colour options are available, as well as an integrated 50mm diamond grade reflective band for night time safety and visibility.

Integral to the design is the integration of rubber ImpactSAFE absorption buffers. The shock of impact is cushioned from directly acting on the fixings and potentially rupturing your concrete slab.

Where heavier duty solutions are required (HGV Yards, etc.) our demountable Drop Core Bollards are the route to go.

We have looked at the age-old problem of potted bollards getting damaged and the huge cost of excavation and replacement costs involved. With the Drop Core Bollard, simply lift-out the cores and replace (see page 32 for more details).



ImpactSAFE Protection Posts

These bolt-down medium-duty posts come with shock absorbing rubber buffers to take the force of impact away from the slab and fixings.



IMPACTSAFE PROTECTION POSTS

ISP-600Y

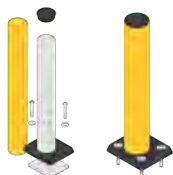
ImpactSAFE post c/w rubber buffer/top cap, yellow sleeve + four safety plus floor anchors

ISP-800Y

ImpactSAFE post c/w rubber buffer/top cap, yellow sleeve + four. safety plus floor anchors

ISP-1000Y

ImpactSAFE post c/w rubber buffer/top cap, yellow sleeve + four. safety plus floor anchors (dia 123mm / 4.8" X 1000mm high)



Product Details

Steel protection posts with ImpactSAFE shock absorbing buffers for impact force.

Slide-over polymer sleeve to eliminate need for re-painting and degradation associated with powder-coated posts.

A high quality finish and protection for all your industrial applications.

No-trip, no-dirt design with flush finish safety-plus floor anchors.

Ideal for mitigating risk of wheeled traffic and operatives clashing with equipment, cabinets and columns.

Technical Details

114mm dia steel cores and baseplates galvanised to BS EN ISO 1461.

Available in 600mm, 800mm and 1000mm standard heights.

123mm dia polymer yellow no-maintenance rotating sleeve and rubber top caps.

ImpactSAFE Bollards

These bolt-down heavy-duty bollards come with shock absorbing rubber buffers to take the force of impact away from the slab and fixings.



Product Details

Industrial steel bollards with ImpactSAFE shock absorbing buffers for impact force.

Slide-over polymer cover kits to eliminate need for re-painting and degradation associated with powder-coated bollards.

A high quality finish and protection for all your industrial applications.

No-trip, no-dirt design with flush finish safety-plus floor anchors.

A full range of bolt-down and potted (Drop-Core) bollards are available on request.

Technical Details

168mm dia steel cores and baseplates galvanised to BS EN ISO 1461.

Available in 1000mm, 1300mm and 1600mm standard heights.

210mm dia polymer cover kits available in a range of colours c/w 50mm reflective band.

IMPACTSAFE BOLLARDS - YELLOW & BLACK

ISB-1000YB	ImpactSAFE bollard c/w rubber buffer/top cap. Polymer cover kit & 4 no. Safety plus floor anchors (1000mm high x 168.3 / 210mm dia)
ISB-1300YB	ImpactSAFE bollard c/w rubber buffer/top cap. Polymer cover kit & 4 no. Safety plus floor anchors (1300mm high x 168.3 / 210mm dia)
ISB-1600YB	ImpactSAFE bollard c/w rubber buffer/top cap. Polymer cover kit & 4 no. Safety plus floor anchors (1600mm high x 168.3 / 210mm dia)

Suffix; BY for ● + ●, YY for all ●, GW for ● + ○, RW for ● + ○



Demountable Drop Core Bollards

A demountable heavy-duty bollard with shock-absorbing gaiter - performing to the standard of a potted bollard without the cost of excavation.



DEMOUNTABLE DROP CORE BOLLARDS

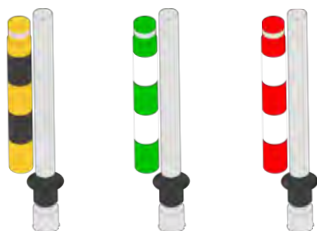
DCB-HD1260-YB

Drop Core Bollard - heavy duty kit
168.3/210mm dia x 1260mm high
AFFL / 1400mm overall (finished hot dip galvanised BS EN ISO 1461)
c/w yellow ● & black ● cover kit

DCB-HD1560-YB

Drop Core Bollard - heavy duty kit
168.3/210mm dia x 1560mm high
AFFL / 1700mm overall (finished hot dip galvanised BS EN ISO 1461)
c/w yellow ● & black ● cover kit

Suffix; BY for ● + ●, YY for all ●,
GW for ● + ○, RW for ● + ○



Product Details

Offering the performance of potted bollards, but with demountable cores.

Diamond core drill the slab, cast-in the ground socket and drop-in the core.
Slide over the polymer cover kit to finish.

Solution benefits from an ImpactSAFE rubber gaiter to arrest the shock of impact from HGVs and forklifts.

The rubber gaiter also dresses the ground socket.

No costly excavation - simply lift out and replace should heavy damage occur.

Technical Details

168mm dia steel cores galvanised to BS EN ISO 1461.

Available in 1260mm and 1560mm standard heights.

Finished in various colours with a 210mm dia polymer cover kit c/w 50mm reflective band.

Polymer Protection Bollards

These heavy-duty safety bollards are a cost effective solution to protect corners, entrances and structures without taking up too much space.

Manufactured from tough HPDE, these bollards are able to take the impact of multiple hits and simply reform afterwards with little or no damage.



Product Details

Ideal for corners, entrances and structures.

Deflects under impact.

Lower repair and maintenance costs compared to metal bollards.

Quick and easy installation.

High visibility colours clearly gives safe working boundaries for MHE operators.

Various Colour Options



Colourfast Yellow & Grey



Hi Vis Yellow & Blue

Safety Yellow & Grey

Technical Details

Manufactured from ballistics grade materials.

Bollard Heights: 600mm, 900mm or 1200mm.

Bollard Width: 240mm (at the footplate).

Fully recyclable and non-toxic.

Use in temperatures as low as -40°C.

Suitable for use in food production and freezer environments.

Bollard Cover Kits

Push-fit polymer covers that simply slide over your new/existing steel bollards without the need for re-painting.



BOLLARD COVER KITS - YELLOW & BLACK

BCK-168-960-YB	Polymer bollard cover kit - dia 168.3mm x 960mm high	● ●
BCK-168-1260-YB	Polymer bollard cover kit - dia 168.3mm x 1260mm high	● ●
BCK-168-1560-YB	Polymer bollard cover kit - dia 168.3mm x 1560mm high	● ●
BCK-219-1260-YB	Polymer bollard cover kit - dia 219.1mm x 1560mm high	● ●
BCK-219-1560-YB	Polymer bollard cover kit - dia 219.1mm x 1560mm high	● ●

Suffix; BY for ● + ●, YY for all ●, GW for ● + ○, RW for ● + ○, BB for all ●

Please contact our Product Specialists for all other sizes.

All common sizes of bollards can be accommodated with the addition of a foam spacer kit.

Product Details

Unique polymer moulded cover kits that fit steel bollards up to 219mm diameter.

Modular push-fit assembly that slide over your existing bollards in minutes.

Vibrant colours that will never need re-painting (custom colours available on request).

All diameters can be accommodated with the addition of impact absorbing spacer kits.

Technical Details

50mm diamond grade reflective bands for improved night time visibility.

Refresh your facility with a high quality safety impact solution - a smart investment with outstanding results.



Brandsafe offers **RIBA-approved CPD seminars and webinars** that advise on the specification of safer industrial workplaces



To enquire about our CPD seminars and webinars email
cpd@brandsafeprotection.com



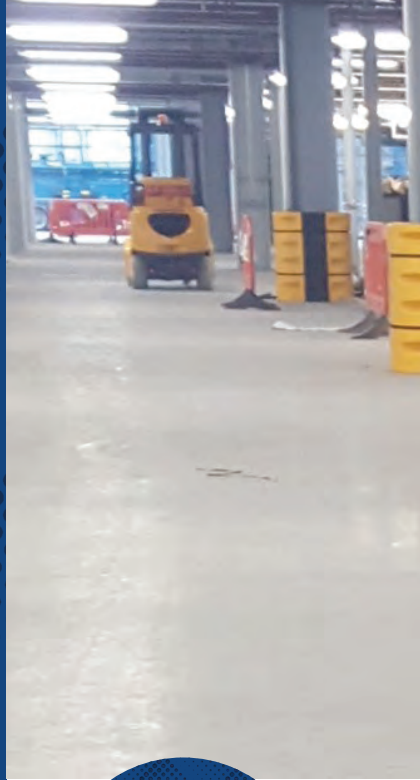
NBS Source
PARTNER



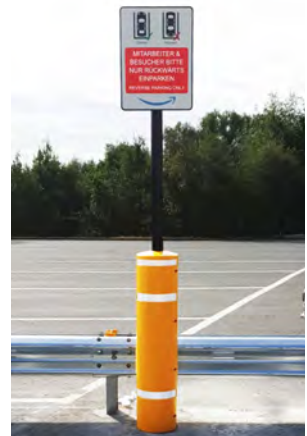
Column and Post Protection

The landlord or business owner demands it, the structural building needs it and the mezzanine structure is not safe without it.

Brandsafe has developed the unrivalled PolyWRAP - the industry leading range of robust, highly visible column protection.



Protects
your staff from
injury and the
building from
damage





Features and Benefits

Installing the PolyWRAP solution gives your columns high visibility protection. Making the columns visible prevents a significant number of typical collisions associated particularly with mechanical handling equipment (MHE) / powered industrial trucks (PIT) traffic.

Our cleverly designed and manufactured PolyWRAP and PolyWRAP SpaceSaver range gives your columns ultimate visibility and ultimate impact protection.

By design, concrete slabs are often cast to column grid lines, which presents issues with floor fix solutions for column protection (proximity to expansion joints/ slab cracking under impact).

The PolyWRAP range not only removes this stress to slabs, but also cushions the MHE/ PIT operators under incidental collision - this is really important to reduce any personal injury to the operator.

A true 360-degree protection solution can be double-stacked to suit the larger reach trucks and externally to suit HGV drivers reversing into column supported canopies.

Couple this with the addition of a low-level protective steel skirt to arrest impacts from forklift trucks and pallets, and you will have significantly protected your staff from injury and the building or mezzanine from damage.

PolyWRAP Column Protector

Tough and robust polymer column protectors - simple, effective and highly visible - a must for forklift trucking routes.



Product Details

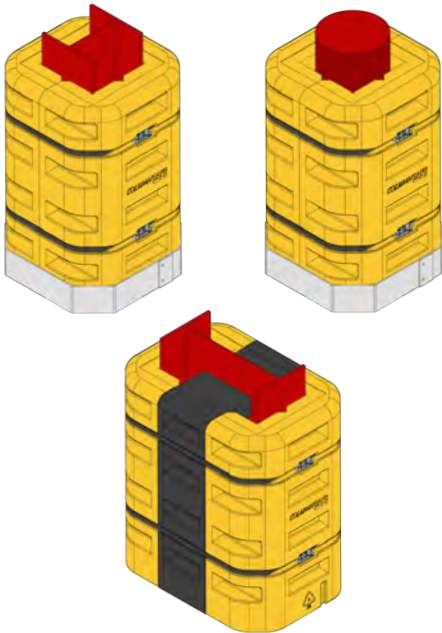
Designed to fit a wide range of common structural steel columns to provide impact protection.

Highly visible colours and simple clam-shell fitment with ratchet strap security.

Stackable with impact absorbing cores to also reduce damage to your vehicles.

800KG ratchet security strapping.

Recess feature to cover baseplates and studs up to 500mm x 500mm.



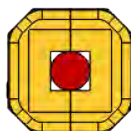
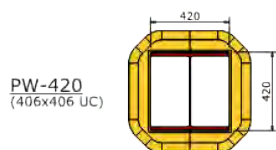
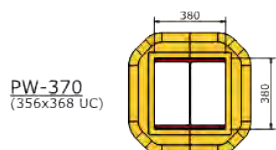
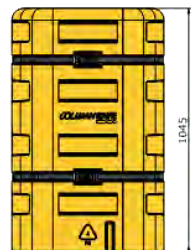
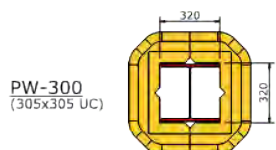
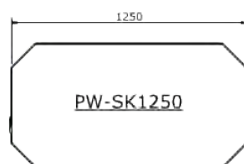
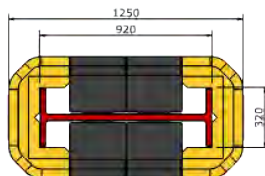
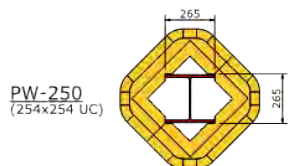
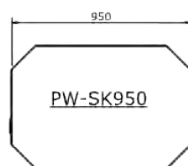
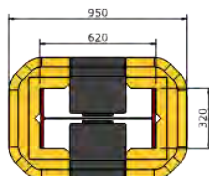
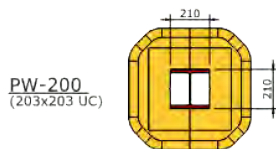
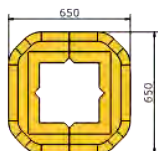
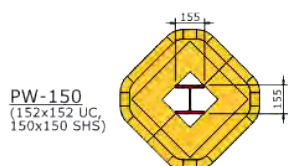
Technical Details

Manufactured in the UK from polyethylene - 100% recyclable.

External footprint 650mm x 650mm x 1045mm high.

POLYWRAP COLUMN PROTECTORS

RANGE	See all moulded variants and part No.s (opposite page)
Steel Fork Impact Skirting HD	Recommended upgrade for sites with low level fork impact associated with low level order pickers (LLOPs)
Steel Fork Impact Skirting SD	Recommended upgrade for sites with high to super duty impact from larger vehicles such as reach trucks
Non-Standard Column Spacer Kits	Non-standard column spacer kits high impact foam spacer kits to modify standard PolyWRAPs to suit your custom size column
Void Fill Kits	High impact foam inserts to close up the voids when fitting PolyWRAPs to UC/UB I beam style columns

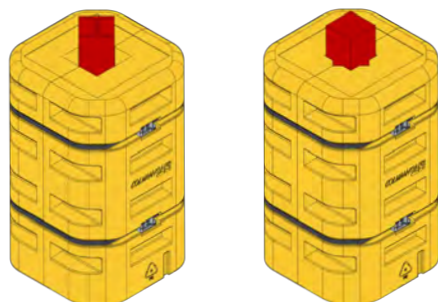


Optional 140mm High Fork
Impact Skirting

Option To Use With Circular Hollow Section Or Square Hollow Section

PolyWRAP SpaceSaver

Designed to perfectly protect mezzanine columns without taking up valuable space.



POLYWRAP SPACESAVERS

RANGE	See all moulded variants and part No.s (opposite page)
Steel Fork Impact Skirting HD	Recommended upgrade for sites with low level fork impact associated with low level order pickers (LLOPs)
Steel Fork Impact Skirting SD	Recommended upgrade for sites with high to super duty impact from larger vehicles such as reach trucks
Non-Standard Column Spacer Kits	Non-standard column spacer kits high impact foam spacer kits to modify standard PolyWRAPs to suit your custom size column
Void Fill Kits	High impact foam inserts to close up the voids when fitting PolyWRAPs to UC/UB I beam style columns

Product Details

Designed to save valuable space and protect vulnerable columns.

Slimline design to fit columns 80mm x 80mm to 254mm x 254mm.

Recess feature to cover base plates and studs 320mm x 320mm.

7 size options, moulded to fit snug to your specific column sizes.

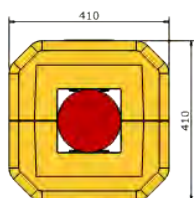
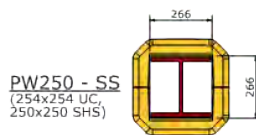
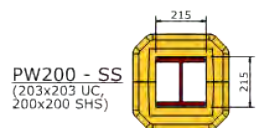
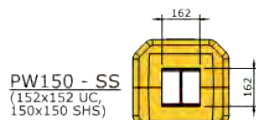
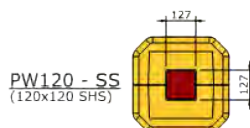
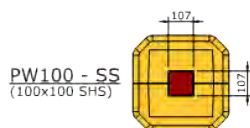
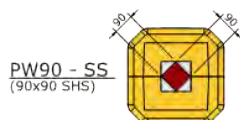
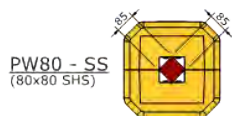
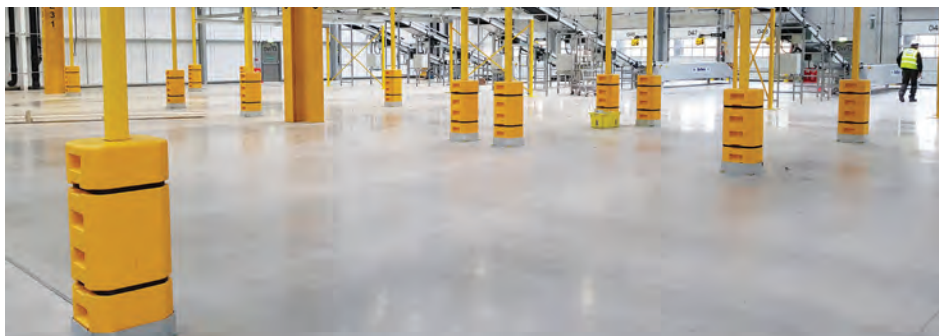
800KG ratchet security strapping.

Other colour options available on request.

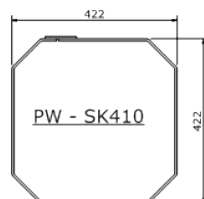
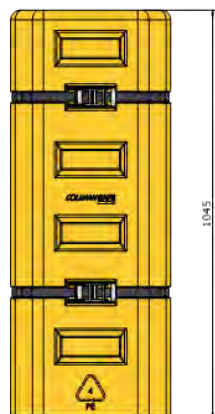
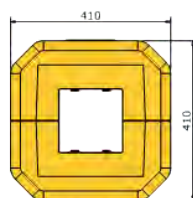
Technical Details

Manufactured in the UK from polyethylene - 100% recyclable.

External footprint 410mm x 410mm x 1045mm high.



Option To Use With Circular Hollow Section

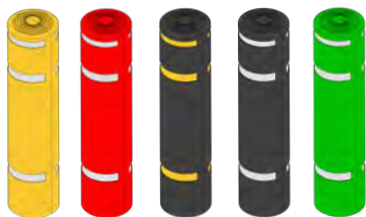


Optional 140mm High Fork
Impact Skirting











Lamp and Sign PostWRAP

A robust protector with high density foam impact absorbing core that makes vulnerable lamp posts and sign posts visible to vehicle drivers.

Moulded in the UK from tough polyethylene – they require no maintenance and with three diamond grade reflective bands they are seen in all conditions night and day.



LAMP AND SIGN POSTWRAP

LSPW-1250-YS	Lamp + Sign PostWRAP protector kit 1250mm high, 280mm dia - yellow with silver reflective bands		
LSPW-1250-BS	Lamp + Sign PostWRAP protector kit 1250mm high, 280mm dia - black with silver reflective bands		
LSPW-1250-BY	Lamp + Sign PostWRAP protector kit 1250mm high, 280mm dia - black with yellow reflective band		
LSPW-1250-GS	Lamp + Sign PostWRAP protector kit 1250mm high, 280mm dia - green with silver reflective band		
LSPW-1250-RS	Lamp + Sign PostWRAP protector kit 1250mm high, 280mm dia - red with silver reflective bands		

Product Details

A two-piece clam-shell designed protector, that is so visible to vehicle drivers they don't get hit in the first place.

No need to excavate and cast in, no need to bolt-down, just simply position and secure with stainless security fixings.

Incorporated in the design is a 'slide-up to gain maintenance access' to the service / inspection hatch.

Note; this product can 'double-stack' to suit LGV / HGV driver visibility at 2500mm high

Technical Details

Suitable for lamp and sign post diameters 50mm – 220mm.

Kits come with a foam core suitable for all sizes – simply remove the foam core sections to suit your site-specific size.

1250mm high for domestic use and stackable to suit commercial vehicles at 2500mm high.

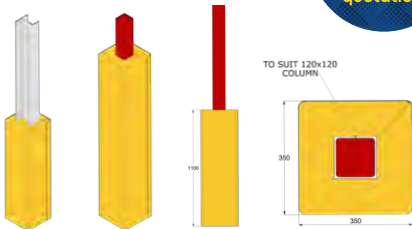
SoftWRAP Protection

Column, Bollard and Lighting Column Protection

Eliminate the risk of personnel injury in your high volume operative environments by installing column SoftWRAPs.



Note; please call our Product Specialists for a custom quotation.



SOFTWRAP PROTECTION

SWB-1000-Y	SoftWRAP bollard protector - fully sealed foam core with yellow canvas covers - to suit bollard size 168mm dia x 1000mm
SWC-1100-Y	SoftWRAP column protector - fully sealed foam core with canvas covers c/w velcro seams and collars - to suit lamp post 76mm / 140mm dia yellow
SWC-1800-Y	SoftWRAP column protector - fully sealed foam core with canvas covers c/w velcro seams and collars - to suit lamp post 89mm / 168mm dia yellow
SWL-1400-Y	SoftWRAP lighting column protector - fully sealed foam core with canvas covers c/w velcro seams and collars - to suit lamp post 76mm / 140mm dia yellow

Product Details

Manufactured from HGV artic trailer canvas with high density foam cores.

Simple fitment with velcro seams, highly visible and effective to deal with your high volume of operatives at shift change.

Consider protection against head, shoulder, arm and hip injuries associated with clashing with steel columns.

We will manufacture to your site-specific column sizes, configurations and heights.

Technical Details

High tear resistant yellow textured vinyl canvas outer.

Polyethylene based medium density foam cores.

Typical heights are either 1000mm or 1800mm.

Easy wrap-around installation - secured to column with 50mm velcro seam.

Traffic Safety and Management

Defining traffic routes from the moment vehicles enter the facility is crucial to site safety.

Brandsafe has developed a range of products and solutions to handle each nuance of safety for your operations and staff.



The traffic system needs to flow optimally to prevent any congestion in parking and operating areas





Features and Benefits

Routing of vehicles across the facility, enabling reversing and parking with safety in mind and trucking goods into the building all present safety and logistical challenges on a busy site.

As industrial sites such as warehouses and logistic hubs get busier, the traffic system not only needs to ensure the highest possible safety levels, it needs to flow optimally to prevent any congestion in the parking and operating areas.

Each site is unique and Brandsafe will be your trusted partner to get this right – from the design stage to the fully installed scheme. It does not need to be expensive to be effective.

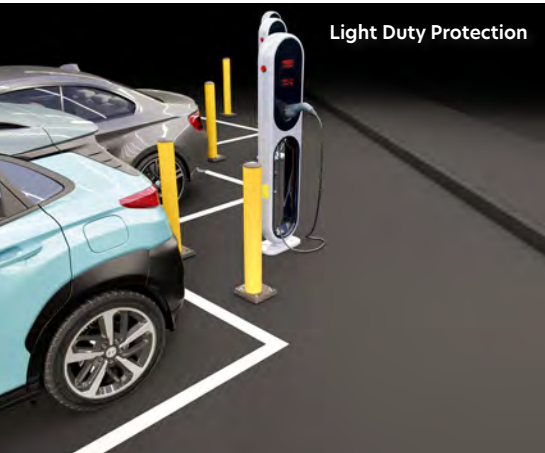
Speed calming, safety signage, parking and reversing to dock control solutions are part of Brandsafe's range of traffic safety solutions. Delineation of traffic routes is also a smart and cost-effective way to achieve traffic flow conformity and safety.



EV Charging Point Protection

A range of impact protection for EV charging points. Providing comprehensive and cost-effective coverage for valuable assets.

We have a wealth of experience providing these protection solutions for global clients, and have seen a recent increase in demand for these systems.



Product Details

- Strong and robust impact protection for charging points.
- Three standard product packages available.
- Domestic, commercial and industrial applications.
- Cost-effective coverage for valuable assets.
- Bespoke solutions can be created on request.

EV CHARGING POINT PROTECTION	
LIGHT DUTY	2 Protection Posts. Ideal for private and small car parks.
MEDIUM DUTY	2 Protection Posts and 1 Domestic Wheel Stop. For industrial and larger public car parks, when there is a medium-to-high risk of impact damage.
HEAVY DUTY	2 Bollards, 1 Commercial Wheel Stop and optional Armco Safety Barriers. For when larger industrial vehicles, such as HLGVs and HGVs, are being used regularly.
BESPOKE SOLUTION	We have the capability and flexibility to create custom solutions to suit the exact requirements of your projects.



Heavy Duty Protection

BESPOKE SOLUTIONS

We have the capability and flexibility to create custom solutions to suit the exact requirements of your projects. This can range from non-standard colours to suit clients' branding, to additional signage and protection for surrounding sign / lamp posts, etc. Brandsafe's team of Product Specialists are on-hand to advise you here.



Bespoke Solutions

LIGHT DUTY PROTECTION

Ideal for private and small public car parks where domestic vehicles are the primary source of traffic, our standard Light Duty Protection package consists of 2 No. ImpactSAFE Protection Posts that are highly visible to pedestrians and drivers. They provide strong and robust impact protection for this type of application.

MEDIUM DUTY PROTECTION

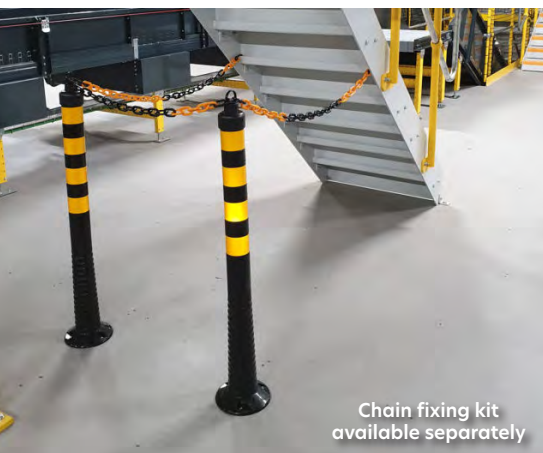
For industrial and larger public car parks, we provide 2 No. ImpactSAFE Protection Posts and a Wheel Stop for added coverage. We recommend this package as a solution when there is a medium-to-high risk of impact damage and where light industrial vehicles (such as electric vans) are going to be using these charging points.

HEAVY DUTY PROTECTION

When there are larger industrial vehicles (such as HGVs and LGVs), we utilise 2 No. ImpactSAFE bollards and a wheel stop. Brandsafe can also offer Armco safety barriers as an additional part of this package, the ideal layout of which we can advise on due to our extensive experience with designing and installing these systems.

Flexi-Delineator Range

Ideal for segregation of traffic routes with risk of vehicle impact where barriers are not achievable or desired.



Chain fixing kit
available separately

Product Details

Where demarcation of traffic routes is paramount for safety.

Segregation of traffic routes where risk of vehicle impact is likely to pedestrians.

Moulded from flexible polyurethane, this product will flex, bend and return to shape.

Height options: 750mm or 1000mm.

Choice of 3 high visibility colours.



Technical Details

80mm diameter post c/w with 3 no. floor anchors (suitable for tarmac or concrete).

100% recyclable polyurethane construction.

Chain fixing kit needs to be purchased separately.

1 x Chain fixing kit is needed per post.



FLEXI-DELINEATORS

FD-1000-YS	Flexi-delineator yellow with silver reflectors 1000mm high c/w fixing kit	● ●
FD-1000-BS	Flexi-delineator black with silver reflectors 1000mm high c/w fixing kit	● ●
FD-1000-BY	Flexi-delineator black with yellow reflectors 1000mm high c/w fixing kit	● ●
FD-1000-WR	Flexi-delineator white with red reflectors 1000mm high c/w fixing kit	○ ●

FLEXI-DELINEATORS ACCESSORIES

FD-A-B	Flexi-delineator adaptor	
FD-SI-B	Flexi delineator chain ring	
CHAIN-BY25	Black + yellow safety chain 25m	● ●
CHAIN-RW25	Red + white safety chain 25m	● ○
FD-DISAB-SIGN	Disabled parking bay - flexi-delineator black/silver 80mm dia x 1000mm high c/w 3 no. Floor anchors (includes signage)	● ●
FD-ELEC-SIGN	Electric car charging bay - flexi-delineator black/silver 80mm dia x 1000mm high c/w 3 no. Floor anchors (includes signage)	● ●



Speed Bumps

Domestic and Commercial Vehicles.
Products specifically designed to calm the speed of vehicles across your facility.



Product Details

Speed bumps - compression moulded in the UK, this product does a great job at a great price.

50mm high for domestic and 75mm high for commercial applications.

Black and yellow mid sections
420mm/480mm wide x 500mm long.

End caps 420mm/480mm wide x 210mm long.

Technical Details

Maximum deterrent and security whilst calming speeds.

Suitable for concrete or tarmac installation.



SPEED BUMPS

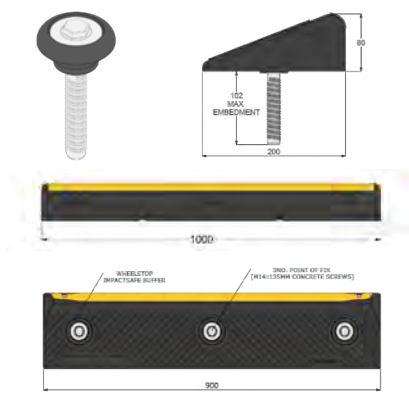
SBK-3000-50BY	50mm Speed Bump Kit 3000mm Long
SBK-4000-50BY	50mm Speed Bump Kit 4000mm Long
SBK-5000-50BY	50mm Speed Bump Kit 5000mm Long
SBK-6000-75BY	50mm Speed Bump Kit 6000mm Long
SBK-3000-75BY	75mm Speed Bump Kit 3000mm Long
SBK-4000-75BY	75mm Speed Bump Kit 4000mm Long
SBK-5000-75BY	75mm Speed Bump Kit 5000mm Long
SBK-6000-75BY	75mm Speed Bump Kit 6000mm Long

Note; contact our Product Specialists to discuss speed calming and safety signage for your site-specific needs

Wheel Stops

Domestic and Commercial Vehicles.

An innovative range of Wheel Stops, designed to provide effective, long-term protection for all vehicle types.



WHEELSTOPS - COMMERCIAL

WS-COMM-Y	1000mm Long ● (Lorries, Vans, Coaches Double Decker and Artic Trailers) 250mm Wide x 130mm High c/w 4no. Floor Anchors, ImpactSAFE buffer plugs and 2No. reflectors - yellow
WS-COMM-B	Black variant ●

WHEELSTOPS - DOMESTIC

WS-CAR-B	900mm Long, 200mm Wide x 80mm High c/w 3 no. Floor Anchors, ImpactSAFE buffer plugs and 2No. Reflectors - black ●
WS-CAR-R	Red variant ●
WS-CAR-Y	Yellow variant ●

Note: Recycled rubber options for both domestic and commercial wheelstops are also available, please ask our Product Specialists for more details

Product Details

Eliminate clash with vehicles parking against perimeter walls, perimeter fencing and/or back to back parking.

Used in warehouse lorry bays to eliminate clash with vehicles parking against perimeter walls, perimeter fencing and/or up against a bay door.

Mitigate the risk of clash with HLGVs rolling over and into the protected area.

Lower the risk of clash with lowered suspension, low bumpers/skirting, mud flaps or undersides of trailers.

Technical Details

Manufactured from robust and semi-flexible PVC.

Fixings provided suitable for concrete or tarmac substrates.

Secure Cages and Enclosures

This new generation of zoning modular cage areas comes with security access and emergency egress gates.



Product Details

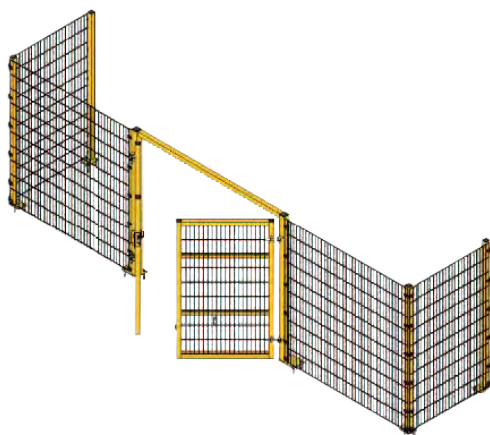
Designed as a complete secure caging and enclosure system for industrial workplaces.

A modular system comprising of posts and mesh panels – configurable during on-site installation.

Gates, padlocks, euro-cylinder locks, emergency push pads and monkey tail-bolts can all be integrated.

Available in 3 finishes:

- Galvanised posts + black mesh
- Yellow posts + black mesh
- Custom colour options





Technical Details

Finished height of system 2050mm or 3050mm.

Maximum post centres 2500mm.

Mesh specification - twin wire 656 panels (200mm x 50mm aperture).

Posts fabricated from 60 x 60 square hollow section c/w baseplate, pre-thread fence clip connections and 4 safety plus floor anchors.



Loading Bay and Door Protection

Loading bays and doorways are areas of high activity in industrial workplaces, and are therefore at a heightened risk of impact damage.

Brandsafe's range has been designed to mitigate, as well as prevent, damaging impacts in these areas - reducing the amount of incidents and maintenance costs.



Protects high activity loading areas from impact damage





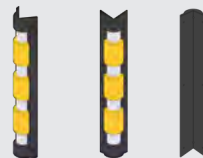
Features and Benefits

Loading bays and doorways are some of the busiest and highest risk areas for impacts in modern industrial buildings. We've developed a range of products to protect people, buildings and assets from potential impact damage.

Our modular Goalpost system provides effective impact protection for loading bays and vulnerable doorways. Our site teams can easily configure these products during installation, with optional Clatter Bars available for added height warnings.

HGV Landing Plates and Wheel Guides are relatively inexpensive solutions that can prevent potentially expensive damage to HGV yards and loading bay areas. Speak to our Product Specialists about the available options.

Corner and edge protection is often overlooked and should always be considered for busy doorways. Our CornerWRAP and EdgeWRAP products are a simple yet effective way to protect people from painful impacts.



Goalposts and Height Warning Clatter Bars

Modular goalpost system with black and yellow bollard bases, available with lightweight and highly visible height warning clatter bars.



CLATTER BARS

CB-P2500-Y	Polymer clatter bar - 2500mm long - yellow + black ●●
CB-P1250-Y	Polymer clatter bar - 1250mm long - yellow + black ●●
CHAIN-BY25	Black + yellow safety chain 25m ●●

Note; contact our Product Specialists to discuss specific door dimensions, signage, chain and connection details for your site specific needs

GOALPOSTS

GP-YB	Modular goalpost system comprising of bollard base units 210mm dia with ImpactSAFE buffers, 89mm dia uprights, 89mm dia crossbars and joining spigot connections yellow + black ●●
--------------	--

Goalposts

Modular goalpost with bollard bases 1200mm high with chemical resin anchors.

Uprights and crossbars with modular connections make installation straight forward.

Send us your door sizes and quantities and we will provide a swift quotation.

Optional clatter bars are available to add on request.

Clatter Bars

Polymer extruded clatters bars - highly visible height warning solution for forklift operators.

Ideal for hanging under mezzanines, doorways and other structural beams.

FoodSAFE specification; galvanised fittings, fixings, chains and steel booms.

Polyethylene extrusions with rubber end caps option: galvanised or black and yellow chain.

HGV Trailer Landing Plates

Avoid expensive future repairs to your loading docks and parking bays with the fitment of HGV landing plates.



Product Details

Designed to protect your loading dock concrete slab from degrading under the continual wear of HGV trailer landing legs.

Maintenance free and highly visible yellow high molecular grade polymer construction.

Chamfered to all edges and countersunk fixings ensure no-trip to operators and drivers.

Technical Details

10mm SDS drill installation - 80mm deep using M10 x 80mm floor anchor.

Other sizes, colours and applications available on request (trailer/dock off-loading transition plates).

HGV TRAILER LANDING PLATES

HGV-LP-1000

HGV trailer landing plate (jockey plate) polymer yellow 1000mm x 1000mm c/w 12 no. Countersunk floor anchor

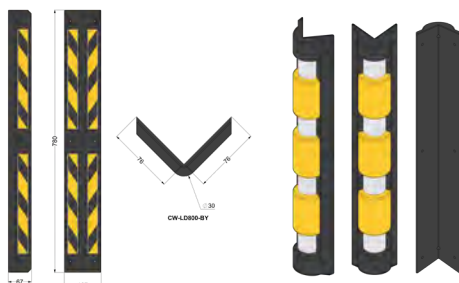
HGV-LP-2000

HGV trailer landing plate (jockey plate) polymer yellow 2000mm x 1000mm c/w 16 no. Countersunk floor anchor

Note; 2 no. HGV landing plates required per bay

CornerWRAP Corner Protection

A complete range of corner protectors that provide protection from impact damage and at the same time providing personnel safety.



Product Details

Protect vulnerable corners of buildings and doorways.

Heavy duty (HD) corner protector - includes two reflective bands, and three ImpactSAFE buffers 890mm long.

Medium duty (MD) corner protector - includes 2 no. black and yellow reflective chevron strips - 780mm long.

CornerWRAP protectors suitable for brick, block, pre-cast concrete and steel-clad substrates.

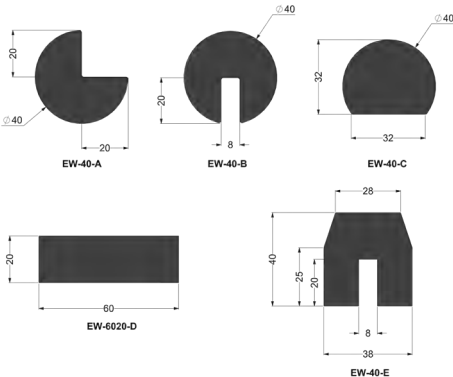
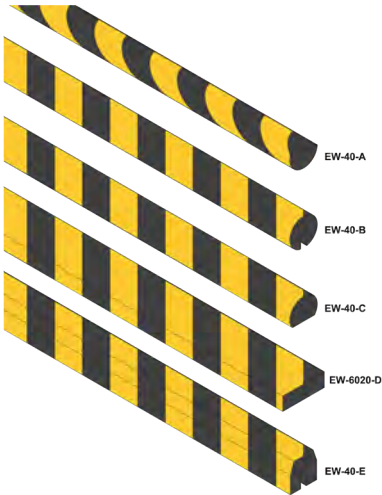
CORNERWRAP

CW-MD780-BY	Medium duty CornerWRAP protector 780mm long c/w 6 no. Fixing holes
CW-HD890-BY	Heavy duty CornerWRAP protector 890mm long c/w 6 no. Fixing holes
FXG-CW-KITA	Fixing kit a - CornerWRAP protector (6 no. Plug + screw for brick, blockwork & pre-cast concrete)
FXG-CW-KITB	Fixing kit b - CornerWRAP protector (6 no. Course tek screw for thin gauge steel + 6 no. Fine Tek screws for thick gauge steel)

Note; contact our Product Specialists for all possible options

EdgeWRAP Edge Protection

A complete range of edge protectors that provide protection from impact damage and at the same time providing personnel safety.



Product Details

Provides safety and visual awareness to sharp edges in the workplace.

Quick to install foam edge protection.

Edge protectors are 1000mm long as standard and supplied complete with 3M self-adhesive strips.

Easy to install with self adhesive strip.

Protect pedestrians from injuries to heads and limbs, as well as snagging of clothing on sharp steelwork.

EDGEWRAP		
EW-40A	EdgeWRAP A 1000mm (self adhesive strips)	● ●
EW-40B	EdgeWRAP B 1000mm (self adhesive strips)	● ●
EW-40C	EdgeWRAP C 1000mm (self adhesive strips)	● ●
EW-40D	EdgeWRAP D 1000mm (self adhesive strips)	● ●
EW-40E	EdgeWRAP E 1000mm (self adhesive strips)	● ●

Note; contact our Product Specialists for all other options

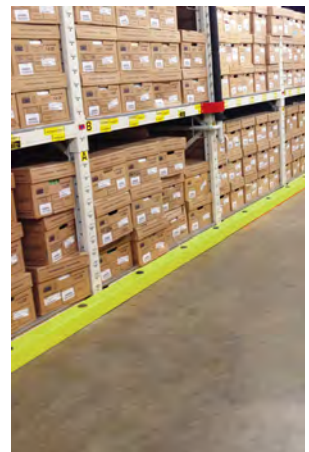
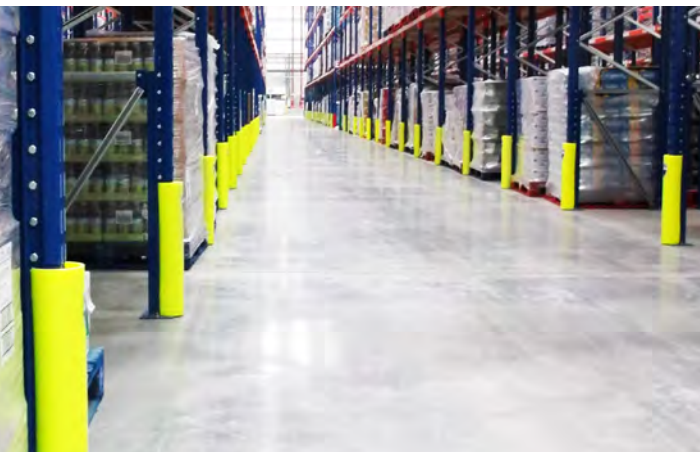
Racking Protection

Racking installations are one of the most valuable areas in a modern industrial building, with major costs associated with any downtime.

Brandsafe can offer a wide range of racking upright and end of aisle protection, as well as low level floor bumpers to protect racking from pallet and forklift impacts.



Protects
valuable aisles
of racking and
warehouse
infrastructure





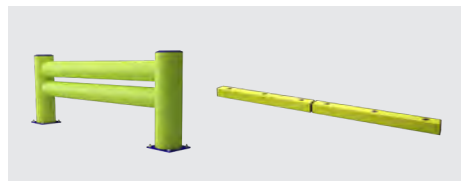
Features and Benefits

Rack Armour® is the world's leading solution for racking upright protection. With its innovative patented design, Rack Armour® is compatible with all major brands of racking and is available in numerous colour variations.

Brandsafe can also offer impact protection for the ends of racking aisles, which can be particularly vulnerable to impact damage in busy warehouses. End of Aisle Rail Barriers are an effective solution to counter these impacts.

End of Aisle Rail Barriers are available in either Single or Double Rail configurations, dependent on the level of impact protection required for these racking arrays. Speak to our Product Specialists about the available options here.

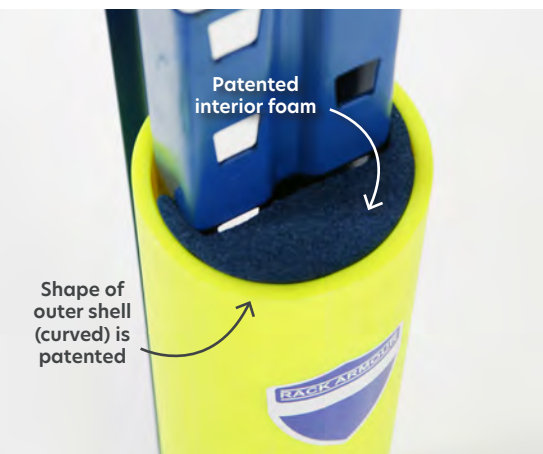
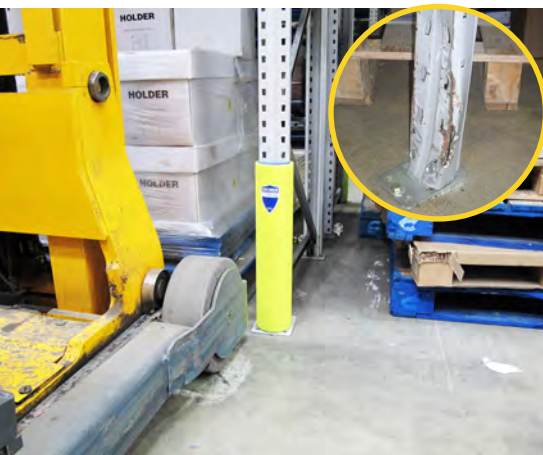
Low level protection is also available in the form of our Floor Rail Bumpers. These are especially effective in protecting against impacts from pallet trucks, providing a cost-effective solution to an expensive problem.



Rack Armour® Upright Protection

Rack Armour® has been a global success for over a decade.

Its innovative design and functionality has revolutionised racking protection and provides a proven reduction in damage levels - saving time, money and hassle.



Product Details

Made from ballistics grade plastic meaning it is able to deflect impact in most cases.

Rack Armour® can't be knocked off while pallets are being retrieved.

Impervious to moisture, mould growth, corrosion, acid, alkaline and most solvents.

Brand and personalise your Rack Armour® labels with your company information.

Technical Details

Foam interior diffuses impact energy to protect uprights.

HDPE tough outer shell deflects impacts and shields upright from damage.

Fits all makes and models of pallet racking.

Lifespan of 15 + years.

Hi visibility colour options clearly provide safe working boundaries for MHE drivers.



Hi Vis Yellow

Safety Yellow



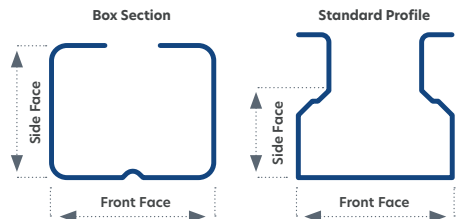
Other hi visibility colours also available to order - contact the sales office for further details



Installation tools also available - hooks and arms



Rack Armour® has been tested to meet and exceed European and Australian safety standards, including EN 15512 and AS4100. Its tight fit ensures that Rack Armour® can't be knocked off whilst pallets are retrieved. When a direct impact occurs and cannot be deflected by the outer shell, the interior foam absorbs the impact energy until it's diffused.



RACK ARMOUR®

Euro A

Fits most racking types with a front face upto 87mm*. Including: Planned Storage 2KL85, Polypal, Stow, Apex, Dexion Speedlock HILO KS

Euro B

Fits most racking types with a front face upto 100mm*. Including: HILO Prem Rack Stow 15, Dexion P90, BITO Carton Live Nedcon, Mecalux

Euro C

Fits most racking types with a front face upto 120mm*. Including: SSI Schaeffer PR600, Redirack HD Polypal Drive In, Link 51 Drive In Dexion P100 Mecalux U 101

* Some racking types do have wider side profiles which sometimes require a larger Rack Armour® guard.

Polymer End of Aisle Barriers

A heavy duty polymer safety barrier system to provide durable impact protection to racking and high visibility to MHE operators.

These end of aisle rail barriers flex and absorb upon impact due to its unique design.



Single or Double Rail Options



Colourfast
Yellow &
Grey

Hi Vis
Yellow &
Blue

Safety
Yellow &
Grey

Product Details

Protect racking, people and vehicles from impact damage with this cost-effective and flexible solution.

Deflects under impact without damaging.

Single or double barrier options.

Quick and easy installation.

High visibility colours clearly gives safe working boundaries for MHE drivers.

Technical Details

Manufactured from a flexible HDPE polymer with a foam diffuser.

Barrier Heights: 455mm or 620mm.

Barrier Width: 240mm (at the footplate).

Barrier Length: 900mm (and upwards).

Fully recyclable and non-toxic.

Use in temperatures as low as -40°C.

Polymer Floor Rail Bumpers

Protect your aisles of racking from low level accidental impact damage with this durable floor bumper system.

These floor rail bumpers are ideal for providing subtle protection at low levels from order pickers, with minimal space intrusion in the warehouse.



Various Colour Options



Colourfast Yellow & Grey



Hi Vis Yellow & Blue



Grey

Product Details

Provides subtle protection at low levels.

Ideal for placing behind bays.

When fixed to the floor, these barriers are strong and durable enough to take knocks and bumps.

Prevents pallets being hit against walls.

High visibility colours to highlight safe pedestrian areas.

Technical Details

Manufactured from ballistics grade materials, making them highly durable.

Bumper Height: 100mm.

Bumper Width: 100mm.

Bumper Length: 900mm (and upwards).

Fully recyclable and non-toxic.

Use in temperatures as low as -40°C.

Warehouse Accessories

Our range of Warehouse Accessories provide the ideal finishing touches for a safe and efficient industrial workplace.

We can provide a full range of solutions from ticketing and labeling, to waste segregation and shelving, ensuring that your warehouse operates at its highest level of efficiency.



Improve
warehouse
efficiency with
our range of
accessories





Features and Benefits

Clear labeling and signage is a key component of a safe and efficient office or warehouse. Our versatile solutions have been designed to work effectively on racking and warehouse floors, as well as office desks and shelving.

The Modulean® range of Shadow Boards is also equally at home in the warehouse as it is in the office. They are available in a range of standard colours and configurations that have been designed to easily achieve 5S Lean compliance.

When it comes to waste segregation in industrial workplaces, the racksack® range has you covered. Available in a range of sizes, colours, fixings and logo designs, we can provide a racksack® for any application.

For the ultimate component organisation and shelving, the Anco® range offers a quick and easy way to create efficient storage arrangements. From Clicka Shelving to Storage Bins, we've got you covered.



Ticket Holders and Label Holders

Organise your racking, shelving, and storage locations with Beaverswood® premium quality tickets and labelling solutions. These products are simple to install (thanks to self-adhesive and magnetic fixings) and deliver reusability and scannability to keep your operations running smoothly.



Self-adhesive fixing



Magnetic fixing



Self-adhesive fixing



Magnetic fixing

Ticket Holders

Self-adhesive fixing for fixed locations.

Magnetic fixing for steel racking/shelving and other steel surfaces.

Pull forward front allows easy updates of information and barcode scanning.

Available in a choice of 5 heights and up to 3m lengths.

Pre-cut sizes from stock.

Label Holders

Instant and highly visible identification.

Self-adhesive or magnetic fixing options.

Standard sizes supplied from stock, specials supplied on request.

Insert card and plastic cover strips included.

Magnetic fixing is available in rolls and is easy to cut to size with scissors.

Magnetic Easy-wipe Racking Strip

Allows for instant magnetic labelling. The magnetic easy-wipe racking strip lets you quickly create labels and identification that's completely reusable and movable. The colour versions have the added benefit of allowing you to create colour-coded areas or highlight a particular message.

BEAVERSWOOD®



Available in 6 colours



Product Details

Cost effective labelling system.

Gloss coloured surface (except matt black).

Ideal for use as colour coding.

Write on - wipe off using a wet wipe marker pen.

Ideal for 5S and Lean environments.

Simply cut to the desired length using scissors.

Technical Details

Available in 12 widths - 10mm to 100mm.

All rolls are supplied in 10m lengths.

Available in 6 colours - white, blue, green, red, yellow and matt black.



MODULEAN®

Modulean® takes away the need (and the headache) for custom shadow boards by delivering a range of modular standard boards that are widely used across the workplace, removing a great deal of expense and time associated with custom shadow boards. They also aid in compliance with the 5S lean system.

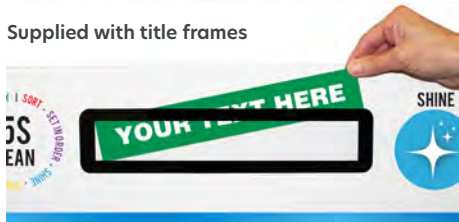


Modulean®
Shadow Boards

Pick and choose from a range of standard boards



Supplied with title frames



Product Details

Modular system to fit any space.

Choose from a range of standard 5S boards.

Various colour options to keep track of tools.

Customise through title frames to suit your brand.

Supplied with the products on display.

Each board is available in 4 colours.

Technical Details

Three styles of shadow boards are available.

Standard Modulean® Shadow Boards - 750mm x 750mm.

Modulean® Lite Boards (smaller and lighter boards that can be used on a mobile system) - 500mm x 500mm.

Modulean® Rack End Boards (for end of aisle racking) - 2000mm x 900mm.



Modulean®
Rack End Boards



racksack® is the original market-leading solution for waste segregation in the industrial work setting, providing a simple and cost effective system that's easy to implement. This innovative family of products will help you to be compliant with the current EU and UK waste segregation legislation.



Product Details

Easy collection of waste that is easy to fix and remove.

Designed for most racking and shelving systems between 900mm and 1100mm.

Hard-wearing and re-usable.

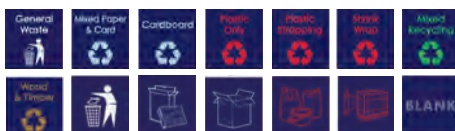
Available in a range of standard designs.

Other designs and special prints are available upon request.

Technical Details

1000mm high x 920mm wide.

The racksack® family includes products that can be attached to warehouse racking, shelving, trolleys, roll cages, stillages, mobile steps and more.



Floor Signals and Floor Graphic Markers

Premium quality floor marking to meet your business needs. Floor markings have multiple purposes, from highlighting warnings or special requirements to identifying pallet storage, equipment positioning or highlighting walkways - plus much more.



Floor Signals

A simple and effective solution for marking areas on the floor.

Tough PVC with an aggressive adhesive.

Capable of withstanding everyday traffic of a fully operational warehouse.

6 colours and 6 shape options.

Apply to a clean, flat, sealed surface.

Floor Graphic Markers

High visibility floor signs with text and symbol only designs.

Large 430mm diameter.

Choose from a range of 36 designs.

Highlights warnings or special requirements.

Slip-resistance tested to R10 standard.

Bespoke prints are available.

frames4floors® and frames4docs®

frames4floors® are tough, colour edged PVC frames that enable a printed message or code to be placed and protected onto the floor.

frames4docs® are a range of colour coded frames designed for easy and prominent document display. They are ideal for creating information centres.



frames4floors®

Flat, colour coded floor identification frames.

Available in 2 insert sizes: A4 and DL.

Choice of 6 stand out colours, making them ideal for Lean and 5S environments.

Permanent industrial strength adhesive to withstand warehouse traffic.

Ideal for identifying bulk stack locations or to highlight important information.

frames4docs®

Enables documents to be framed and displayed.

Available in sizes to fit A2, A3, A4 and A5.

Magnetic and self-adhesive fixing options.

Available in 8 colour options, making them ideal for Lean and 5S environments.

Frames can be used horizontally or vertically.

Component Organisers

Component organisers are the ideal small parts organiser for your item storage needs. The body and frame are made from durable high impact polypropylene and the drawers and partitions are made from transparent polypropylene.



ANCO STORAGE



Product Details

Ideal for organising your small parts storage.

Manufactured from high quality polypropylene.

8 options available to suit your needs.

Suitable for any workplace.

Technical Details

Each drawer comes with its own removable horizontal partition.

Can be screwed directly on a wall with the pre-configured holes or mounted on a wall with specially designed frames.

Can be mounted on metal louvre panels with the help of four clips for better mounting which can be fitted on the back wall of the cabinet.

Clicka Shelving

Clicka shelving offers a solution to your storage needs, as well as your budget. It is simple to put together, yet has all the strength you are likely to require. Whether you are fitting out the home or workplace, our Clicka shelving kits offers strength and simplicity at an incredible price.



Clicka
Galvanised 265
(Mesh Decking)

ANCO STORAGE



Clicka 175 (MDF)

Product Details

Best value shelving system.

Superior quality and strength.

Robust and strong - Fully tested and certified by GS TUV.

Easy to assemble and re-configure.

Build a bay in less than 10 minutes with just a rubber mallet.



Technical Details

Available in 175kg and 265kg shelf capacities.

Manufactured with high quality materials and finish.

Clicka 175 (MDF)
1800mm x 900mm x 450mm.
1800mm x 900mm x 600mm.

Clicka Galvanised 265 (Mesh Decking)
1980mm x 1200mm x 600mm.

Long Rivet Packing Workstation

Our Long Rivet Packing Workstations come with an upper storage level for additional storage and, depending on the bench configuration, you get a lower storage level as well. Ideal for order processing, packing and manufacturing.

Product Details

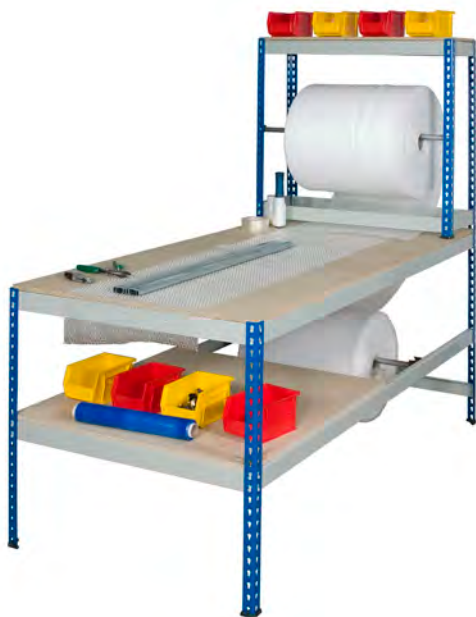
Long packing bench with lower bubble wrap dispenser and upper paper roll dispenser.

Cost-effective and easy to use.

Two width options available.

Includes upper and lower shelves for additional storage.

ANCO STORAGE



Technical Details

Each order includes uprights, plastic feet, all necessary beams, chipboard tops and 2 roll dispensers.

All dispensers are simply and quickly lifted out to change the rolls.

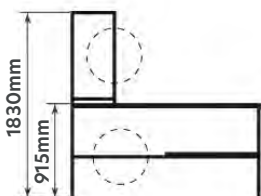
Two width options available - 915mm and 1220mm.

Up to 300kg bench load capacity.

Chipboard top



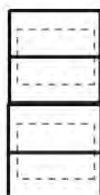
Strong and robust roll dispenser



1220mm



915mm



Plastic Storage Bins

Easily identify contents. These bins have a large identification area as well as a large open picking face, meaning the contents can be easily identified and picked efficiently.

Available in 3 colour options, making them ideal for 5S and Lean environments.



Product Details

Plastic Storage Bins that can be used in any environment time and time again.

The quality and ergonomic design means all our plastic bin can be stacked securely or hung on louvre panels.

These bins are efficient in any small part picking environment.

Labels included with each bin.

Technical Details

Strong and robust plastic bins manufactured from shock proof plastic.

Ideal for heavy duty industrial applications.

Available in 9 sizes and 3 colours.

Ideal for 5S and Lean environments.

Stack or hang on louvre panel.



IWS Group Services

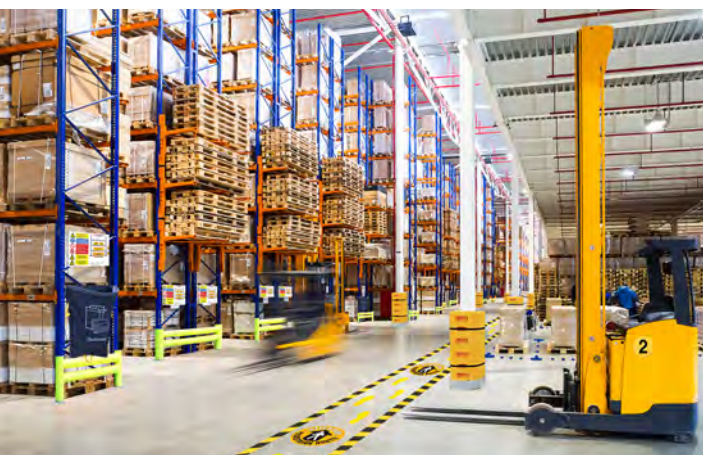
IWS Group is a family of market-leading product brands, manufacturers and service companies; providing essential services and supplies to the warehousing, logistics, material handling and other industrial sectors around the world.

Here at IWS Group, we are helping companies to overcome some of the key challenges in the industrial workplace; from employee safety and the physical safeguarding of property and assets, to productivity and workforce efficiency, as well as the increasing demands around recycling and sustainability.

IWS GROUP
the Industrial Workspace Specialists



Visit
[iws.group](https://www.iws.group)
for more
information about
our range of
products and
services



BRANDSAFE
the impact safety specialists

EST. 1984
BEAVERSWOOD
making the workplace work smarter

RACK GROUP
the industrial racking specialists

ANCO STORAGE
exclusively trade



Our Products

The IWS Group's range of products and solutions covers workplace safety, impact protection, racking repairs and maintenance, recycling, 5S and visual communications; with full turnkey services available and a wide distribution network across Europe and beyond.



Our Services

With the collective expertise of sister companies Brandsafe, Beaverswood, Rack Group and Anco, we are able to offer you a comprehensive range of services and solutions, including:

- Racking repairs and maintenance
- Safety inspections and training
- Impact protection
- Security caging
- Traffic management
- Label installations
- Racking protection
- Racking installations and alterations
- Warehouse waste segregation
- Labelling and warehouse identification
- Floor markings
- Shadow boards
- Storage and shelving

BRANDSAFE

the impact safety specialists

part of **IWS GROUP**
the Industrial Workplace Specialists

+44 (0)1525 850222
sales@brandsafeprotection.com
brandsafeprotection.com



- SAFETY BARRIERS
- ARMC0 ACCESSORIES
- BOLLARDS AND COVER KITS
- COLUMN AND POST PROTECTION
- TRAFFIC SAFETY AND MANAGEMENT
- LOADING BAY AND DOOR PROTECTION
- RACKING PROTECTION
- WAREHOUSE ACCESSORIES