

Brandsafe

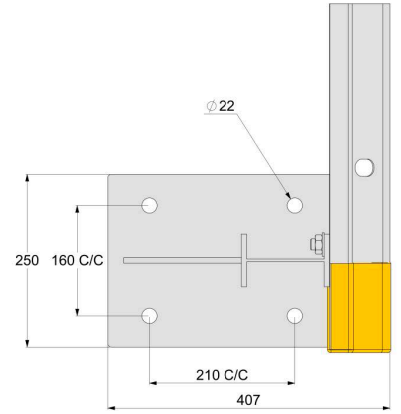
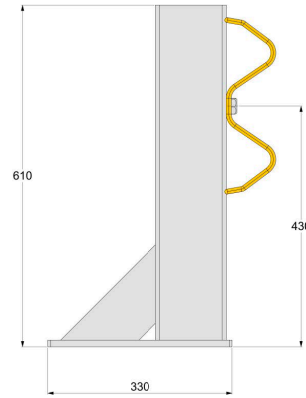
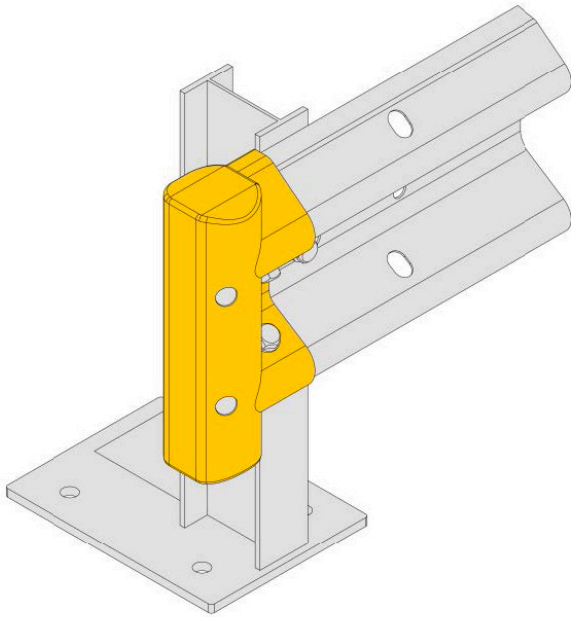
Armco 610 Safety Barrier

Armco 610 safety barriers are the industry standard offering for domestic car parks and vehicles. It provides a cost-effective system for the protection of building walls, equipment, front-of-house areas and access roads. Compliant with the relevant British standards for domestic car parks (BS EN 1991-1-1:2002), these barriers are quick to install on-site and it can be supplied with various polymer Armco safety ends and corners.



Features and Benefits

- 610 mm high Armco barriers meet the current design standard recommended by the department of transport.
- BS EN 1991-1-1:2002 compliant system (British standard for domestic car parks).
- A cost-effective solution for low-level traffic impact protection.
- Can be supplied with Armco fishtail safety ends and corners.
- We recommend 1.6 M post centres for high impact areas and 3.2 M post centres for low impact areas.
- Should be fixed with M16/M20 thru bolts or a M16 chemical resin/stud fix.



Material	Mild steel
Height	610 mm / 445 mm to centre of barrier
Fixing holes	4 per baseplate
Colour options	Hot dip galvanised to BS EN ISO 1461
Safety reflectors	Diamond grade to all accessories
Base plate	Type B - 330 mm x 250 mm x 12 mm thick
Edge spacing	Conforms to 100 mm minimum
Footprint depth	409 mm
Centre spacing	160 mm x 210 mm (conforms to minimum of 100 mm)
Floor anchors	M16 x 150 mm galvanised thrubolts